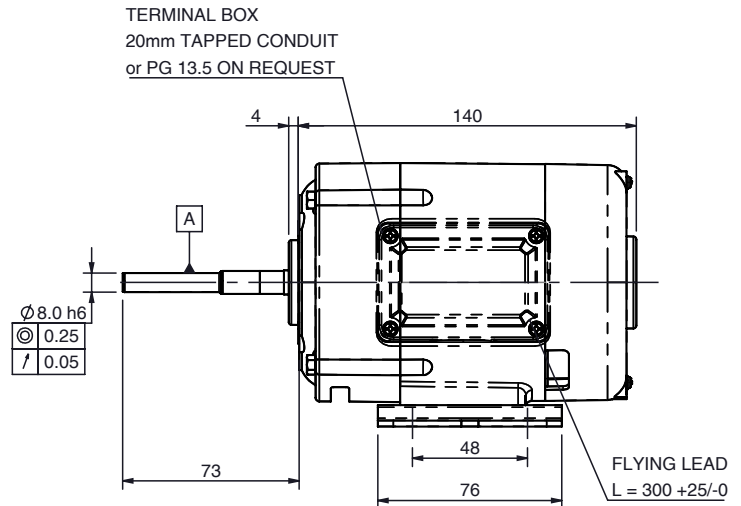
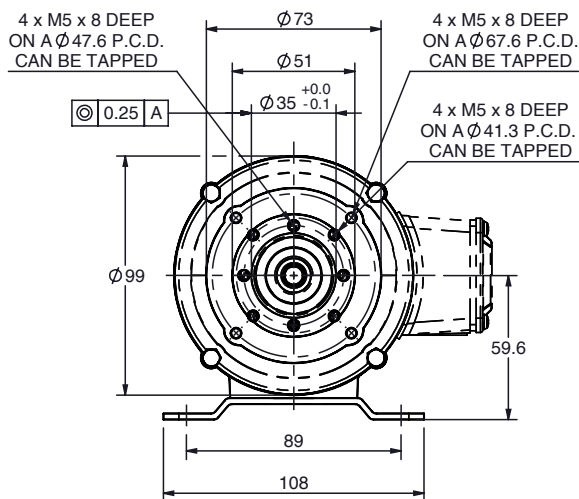


SD11 (SERIES) AC/DC motor

Ø99 mm frame

all dimensions in mm

parvalux
by **maxon**



Part number key

Modular	#####
Standard	#####
Calculated data	#####

Please see our customisation options page for details on the modifications available on our products. Advice and guidance on these options are available from your local sales engineer.

Note: Terminal box and feet optional on this motor - please contact your local sales engineer for more information.

Technical data

1 Part number		-	-	-	-	-	-	-	-
2 Minimum voltage available	V	12	12	12	12	12	12	24	36
3 Nominal power	W	15	30	18.5	30	75	95	125	150
4 Nominal speed	rpm	2000	2000	3000	3000	3000	4000	5000	6000
5 Nominal continuous torque (S1)	Nm	0.07	0.14	0.06	0.10	0.24	0.23	0.24	0.24
6 Input current 240 V AC	A	0.19	0.60	0.24	0.27	1.00	1.10	1.15	1.30
7 Input current 220 V AC	A	0.20	0.65	0.25	0.30	1.10	1.20	1.40	1.60
8 Approximate starting current ¹	A	3 x F.L.	3 x F.L.	3 x F.L.	3 x F.L.	3 x F.L.	3 x F.L.	3 x F.L.	3 x F.L.
9 Input power	W	40	70	50	60	160	190	220	290

¹3 x F.L. = 3 x Full Load

Thermal data

10 Ambient temperature	°C	40
------------------------	-----------	----

Mechanical data

11 Radial load [distance from flange]	N [mm]	200 [15]
---------------------------------------	---------------	----------

Other data

12 Weight	Kg	2.5
13 Enclosure		VENT/TENC
14 IP Rating - Ventilated		IP23
15 IP Rating - TENC [with terminal box]		IP50 [IP54]
16 Insulation Class		F
17 Type		Series wound
18 Direction		Reversible

Compatible products

Gearbox	Page	Brake	Page #
M Box	222	1.5 Nm	258
L Box	226	2.0 Nm	259
MWS	230		
LIW	242		
LIS	244		
LWS	236		

Encoder	Page #
On request	-

Key

Standard combination

Modular combination

SD11 (SERIES) combinations

Quickview - combination drawing and technical data

parvalux
by **maxon**

Combination drawing		Technical data							
SD11-M-Box		Gear material ¹	Comp.	Comp.	Comp.	Bronze	Bronze	Bronze	
		Gear ratio ²	:1	4	30	72	4	30	72
		Speed rpm	1500.0	200.0	83.3	1500.0	200.0	83.3	
		Nominal torque Nm	0.8	5.0	5.0	0.7	4.4	6.9	
SD11-L-Box		Gear material ¹	Comp.	Comp.	Comp.	Bronze	Bronze	Bronze	
		Gear ratio ²	:1	5	30	60	5	30	60
		Speed rpm	1200.0	200.0	100.0	1200.0	200.0	100.0	
		Nominal torque Nm	1.1	5.2	7.9	1.0	4.7	6.5	
SD11-MWS		Gear material ¹	Comp.	Comp.	Comp.	Bronze	Bronze	Bronze	
		Gear ratio ²	:1	24	120	1400	-	-	-
		Speed rpm	250.0	50.0	4.3	-	-	-	
		Nominal torque Nm	4.4	21.3	45.0	-	-	-	
SD11-LWS		Gear material ¹	Comp.	Comp.	Comp.	Bronze	Bronze	Bronze	
		Gear ratio ²	:1	36	400	1200	36	400	1200
		Speed rpm	166.7	15.0	5.0	166.7	15.0	5.0	
		Nominal torque Nm	6.4	28.0	28.0	6.4	45.0	45.0	
SD11-LIS		Gear material ¹	Comp.	Comp.	Comp.	Bronze	Bronze	Bronze	
		Gear ratio ²	:1	6	50	115	-	-	-
		Speed rpm	1000.0	120.0	52.2	-	-	-	
		Nominal torque Nm	1.1	9.2	21.3	-	-	-	
SD11-LWS		Gear material ¹	Comp.	Comp.	Comp.	Bronze	Bronze	Bronze	
		Gear ratio ²	:1	48	672	3450	-	-	-
		Speed rpm	125.0	8.9	1.7	-	-	-	
		Nominal torque Nm	7.8	100.0	100.0	-	-	-	

Key

Standard combination / standard gear ratio

Modular combination / modular gear ratio

Notes

¹ Comp. = Composite gears

² Full gear ratio options displayed on individual gearbox datasheets

→ Technical data displayed above calculated based on **SD11 (SERIES) 36V 6000 rpm** motor.

→ Simplified drawings displayed above show overall envelope size of the combination. Please see individual motor and gearbox datasheets for detailed technical drawings.