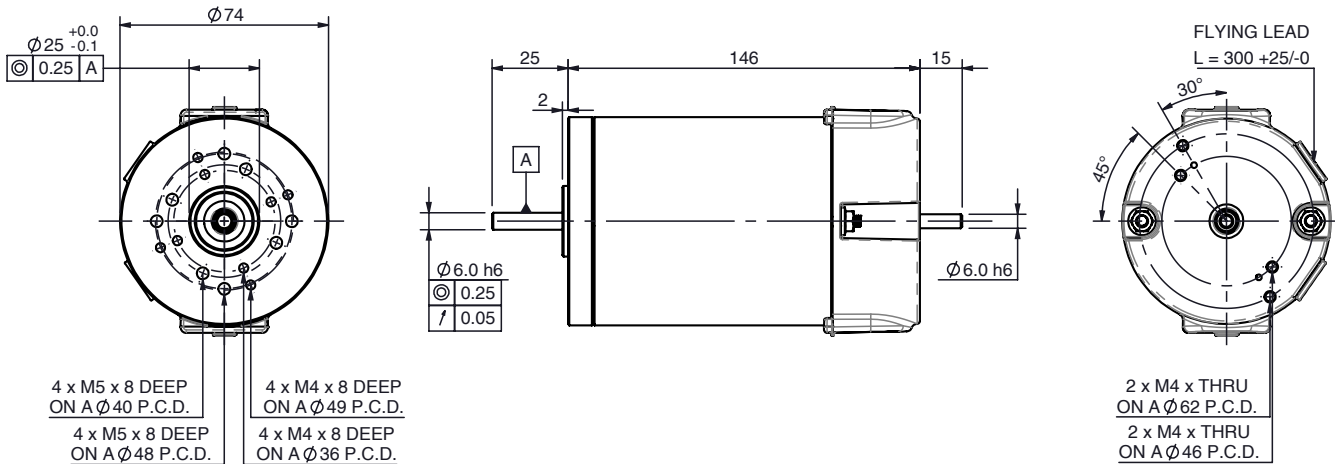


BRx70-60 PMDC motor

Ø70 mm frame // 60 mm stack

parvalux
by **maxon**



all dimensions in mm

Part number key

Modular	#####
Standard	#####
Calculated data	#####

Please see our customisation options page for details on the modifications available on our products. Advice and guidance on these options are available from your local sales engineer.

Technical data

1 Part number		781095	781096	781097
2 Nominal power	W	157	157	157
3 Nominal voltage	V	12	24	48
4 No load speed	rpm	3970	3580	3310
5 No load current	A	1.80	0.80	0.37
6 Nominal speed	rpm	3000	3000	3000
7 Nominal continuous torque (S1)	Nm	0.5	0.5	0.5
8 Nominal continuous current (S1)	A	21.0	9.0	4.2
9 Max. intermittent torque (S2 - 15 minutes)	Nm	0.88	0.88	0.88
10 Stall current	A	70.7	48.0	28.7
11 Stall torque	Nm	1.8	2.8	3.6
12 Stack length	mm	60	60	60
13 Maximum efficiency	%	72	79	82
14 Terminal resistance	Ω	0.10	0.36	1.51
15 Terminal inductance	mH	0.15	0.81	3.29
16 Speed constant	rpm/V	333.1	150.4	69.1
17 Torque constant	Nm/A	0.026	0.060	0.130
18 Speed torque gradient	rpm/Nm	2423	1383	985
19 Rotor inertia	gcm²	2.5×10^{-4}	2.5×10^{-4}	2.5×10^{-4}

Thermal data

20 Ambient temperature	°C	40
------------------------	-----------	----

Mechanical data

21 Radial load [distance from flange]	N [mm]	200 [15]
---------------------------------------	---------------	----------

Other data

22 Number of poles		2
23 Weight	Kg	2.25
24 IP rating		IP54
25 Enclosure		Enclosed
26 Insulation Class		F
27 Reversible		Yes

Compatible products

Gearbox	Page #	Brake	Page #	Controller	Page #
GB80	67	1.5 Nm	80	SC 50/15	82
PGx52	249	2.0 Nm	259	EPOS	265
PGx70	250	Power-On	261	ESCON	274
GB12	68				

Encoder	Page #
Incr. 5-pin	78
Incr. 10-pin	78
Diff. 10-pin	79
Magnetic	256

Key

Standard combination
Modular combination

BRx70-60 combinations

Quickview - combination drawing and technical data

parvalux
by **maxon**

Combination drawing		Technical data							
BRx70-60-GB80		Gear material ¹	Comp.	Comp.	Comp.	Bronze	Bronze	Bronze	
		Gear ratio ²	:1	15	30	60	-	-	-
		Speed	rpm	200.0	100.0	50.0	-	-	-
		Nominal torque	Nm	5.8	8.0	6.0	-	-	-
		Intermittent torque	Nm	10.2	13.0	10.0	-	-	-
BRx70-60-P-Gx52		Gear material ¹	Comp.	Comp.	Comp.	Bronze	Bronze	Bronze	
		Gear ratio [stages] ²	:1	-	-	-	3.9 [1]	44 [2]	172 [3]
		Speed	rpm	-	-	-	769.2	68.2	17.4
		Nominal torque	Nm	-	-	-	1.9	15.0	30.0
		Intermittent torque	Nm	-	-	-	3.3	23.0	45.0
BRx70-60-P-Gx70		Gear material ¹	Comp.	Comp.	Comp.	Bronze	Bronze	Bronze	
		Gear ratio [stages] ²	:1	-	-	-	3.9 [1]	21 [2]	44 [2]
		Speed	rpm	-	-	-	769.2	142.9	68.2
		Nominal torque	Nm	-	-	-	1.9	9.7	20.2
		Intermittent torque	Nm	-	-	-	3.3	17.0	35.6
BRx70-60-GH12		Gear material ¹	Comp.	Comp.	Comp.	Bronze	Bronze	Bronze	
		Gear ratio ²	:1	15	30	60	15	30	60
		Speed	rpm	200.0	100.0	50.0	200.0	100.0	50.0
		Nominal torque	Nm	6.2	10.8	16.5	5.6	9.8	15.0
		Intermittent torque	Nm	11.0	19.0	29.0	9.9	17.2	26.4

Key

Standard combination / standard gear ratio

Modular combination / modular gear ratio

Notes

¹ Comp. = Composite gears

² Full gear ratio options displayed on individual gearbox datasheets

- Technical data displayed above calculated based on **BRx70-60 48V 3000 rpm** motor. Intermittent torque displayed based on S2 - 15 minute duty cycle.
- Simplified drawings displayed above show overall envelope size of the combination. Please see individual motor and gearbox datasheets for detailed technical drawings.