

parvalux
by maxon

We know how to move

packaging automation

www.parvalux.com/packaging-automation

About Parvalux


A true British manufacturing success story, Parvalux is the UK's largest fractional-horsepower electric motor manufacturer and supplier, with state-of-the-art manufacturing and service facilities.

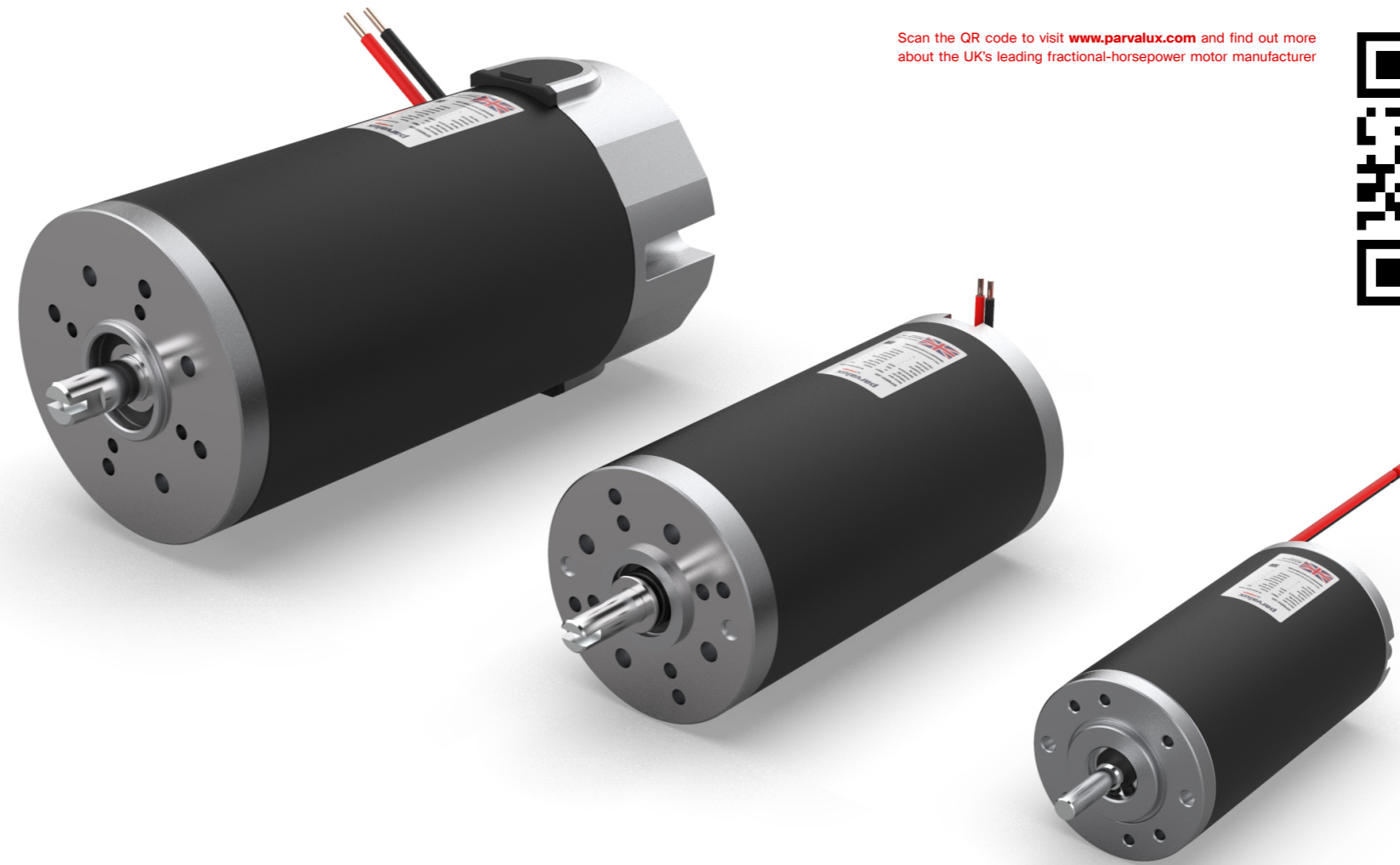
We have nearly 80 years' experience creating the perfect combination of motor and gearbox to match our customers' applications and we offer thousands of standard AC, DC brushed and DC brushless electric motor options.

We can easily customise any motor or gearbox to meet your exact requirements, with our expert in-house design team on hand to help you choose, customise, or design from scratch a geared motor solution that ensures you gain a competitive advantage in your market.

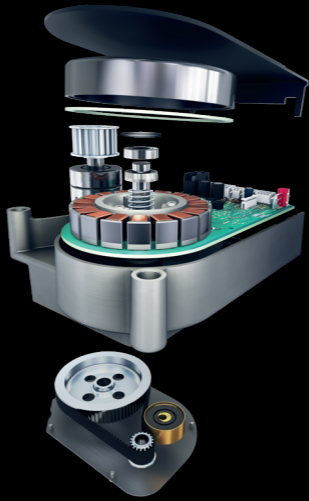
Our products provide unbeatable reliability and performance, even in challenging conditions, and can be found in thousands of applications all over the world.

Since 2018, Parvalux has been part of the maxon group. This means that we have representation on every continent and the backing of one of the finest technical teams on the planet.

 **Require assistance with your project?**
Don't hesitate to contact your local sales engineer, found on the last page of this brochure.



Scan the QR code to visit www.parvalux.com and find out more about the UK's leading fractional-horsepower motor manufacturer



maxon Precision Drive Systems

In 2018 Parvalux was acquired by Swiss motor manufacturer, maxon. Their brushless and brushed DC motors with ironless windings are among the best in the world; with flat motors with iron cores completing their modular product portfolio.

maxon's modular system includes planetary and spur gearheads, spindle drives, as well as encoders and control electronics.

We know how to move

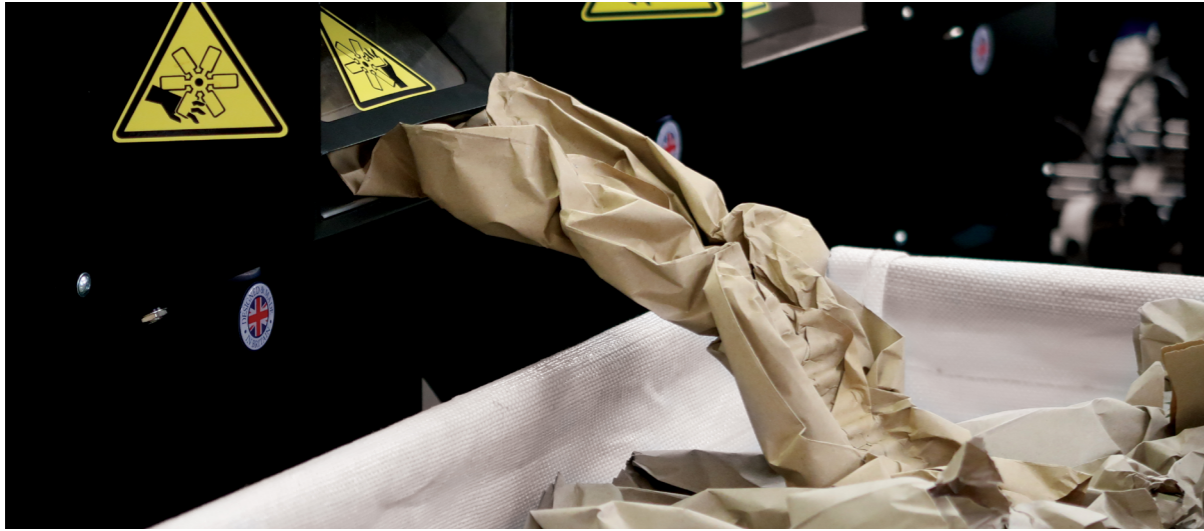
packaging automation

The global packaging automation market is rapidly expanding, driven mainly by the rising demands of e-commerce and logistics for faster, more flexible, and more sustainable packaging processes.

With an expansive standard product range, and the ability to create fully custom solutions from scratch, Parvalux is the first choice for many manufacturers of packaging automation systems such as void-filling systems, shrink wrapping machines, on-demand packaging, and case sealing machines.

Void-filling machines	05 - 12
Pallet wrapping machines	13 - 20
On-demand packaging	21 - 28
Case sealing machines	29 - 36





Void-filling systems

Void filling machines automate the insertion of packing materials such as air pillows or paper to ensure products are safe and protected during transportation and shipping processes. Parvalux motors power these systems with smooth, reliable motion to feed, cut, and dispense packaging materials on demand.

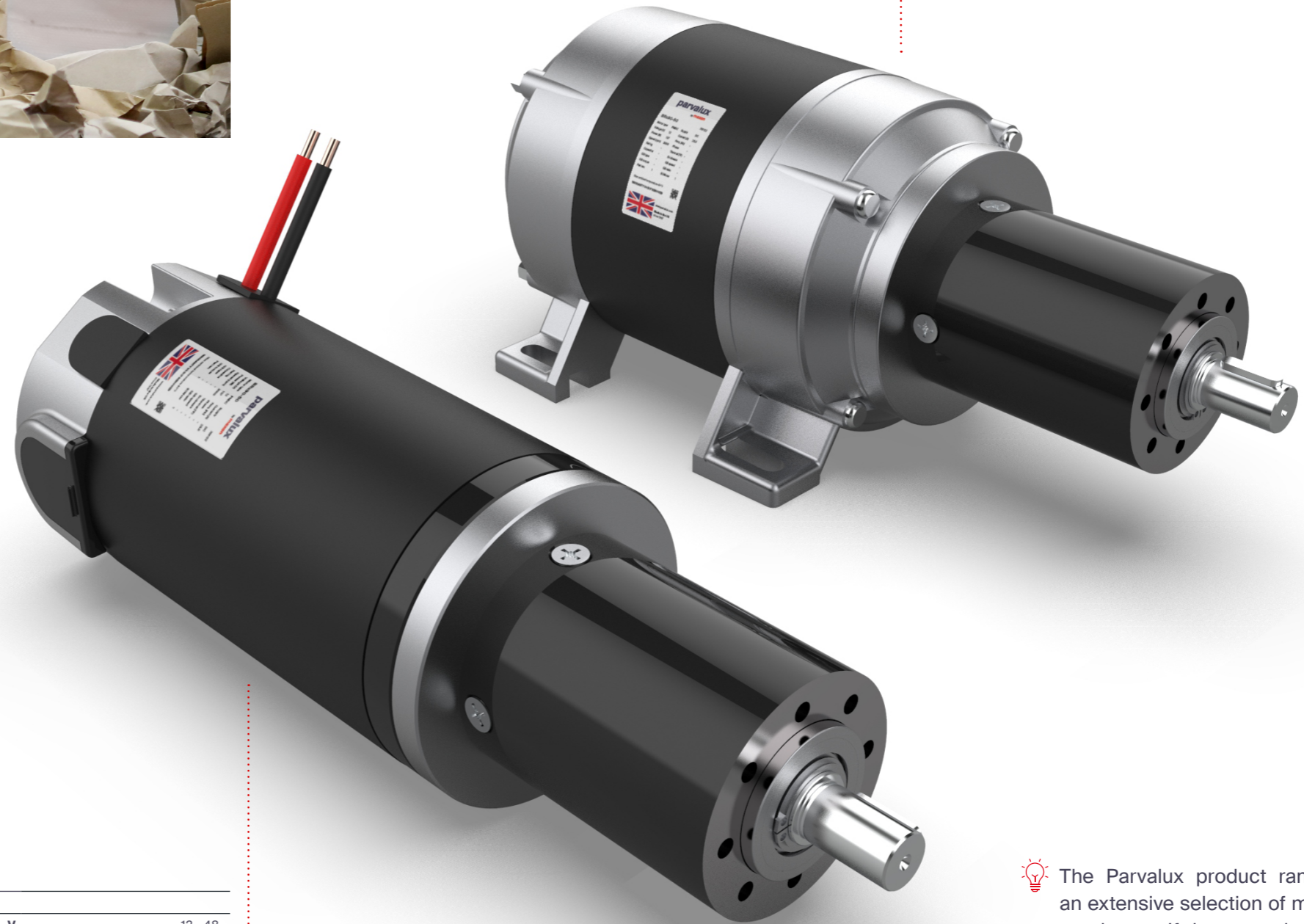
Our compact, high-torque gear motors ensure consistent operation, reduced risk of jams or misfeeds, and an efficient power supply that is essential for e-commerce and fulfilment centres where speed and accuracy are vital.


BRx70-PGx52		
Voltage	V	12 - 48
Power	W	79 - 157
Speed	rpm	27 - 566
Nominal torque	Nm	1.3 - 30.0
Intermittent torque	Nm	2.1 - 45.0

[Detail specification available on page 11](#)

SD28-PGx52		
Frequency	Hz	50 - 60
Voltage	V	115 - 400
Power	W	55 - 120
Speed	rpm	13 - 642
Nominal torque	Nm	1.4 - 30.0

[Detail specification available on pages 07 - 10](#)

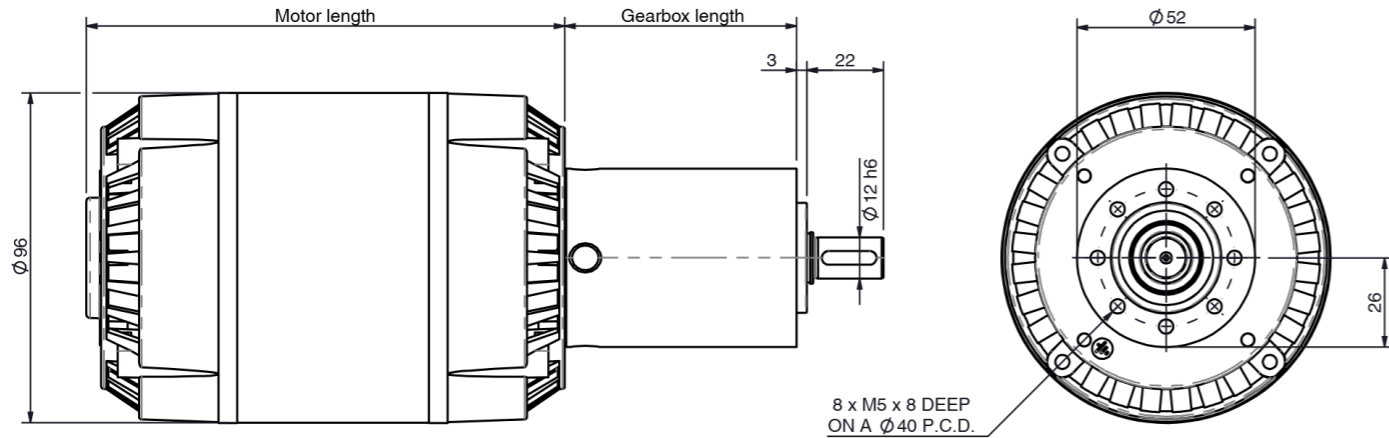


 The Parvalux product range offers an extensive selection of motors and gearboxes. If the examples selected within this section do not meet your specification please get in touch with your local sales engineer to discuss your requirements.

SD28 (1 Phase, 2 Pole)-PGx52 AC planetary geared motor

230/115 V // 100 W // 25 - 642 rpm // 1.4 - 30.0 Nm

all dimensions in mm



Combination data									
Motor		SD28 50Hz	SD28 50Hz	SD28 50Hz	SD28 50Hz	SD28 60Hz	SD28 60Hz	SD28 60Hz	SD28 60Hz
Phase		1	1	1	1	1	1	1	1
Poles		2	2	2	2	2	2	2	2
Frequency	Hz	50	50	50	50	60	60	60	60
Voltage	V	230/115	230/115	230/115	230/115	230/115	230/115	230/115	230/115
Nominal motor power	W	100	100	100	100	100	100	100	100
Gearbox ratio	:1	5.3	16	62	111	5.3	16	62	111
Nominal speed	rpm	528	175	45	25	642	213	55	31
Nominal torque (S1)	Nm	1.7	5.0	18.8	30.0	1.4	4.1	15.5	27.7

Motor only data			Motor accessories	
Motor	SD28 50Hz	SD28 60Hz		
Phase	1	1	Brake	
Poles	2	2	→ 2.0 Nm	
Frequency	Hz	50	Encoder	
Nominal voltage	V	230/115	N/A	
Nominal power	W	100	Controller	
Nominal speed	rpm	2800	N/A	
Continuous torque (S1)	Nm	0.34		
Weight	Kg	3.6		
Stack length	mm	56		
Motor length	mm	140		
Capacitor	MFD	6.0 / 20.0		

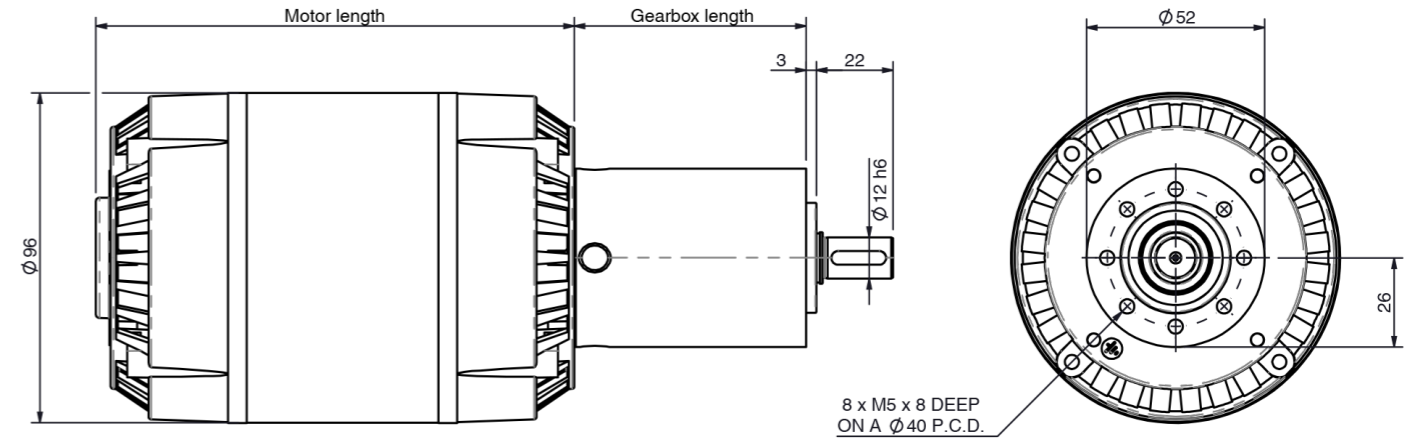
Gearbox only data					Gearbox accessories	
Part number	891042	891043	891044	891047		
Ratio	:1	5.3	16	62	111	Shaft modifications
Stages		1	2	3	3	
Max. continuous torque (S1) ¹	Nm	5.0	15.0	30.0	30.0	
Max. intermittent torque	Nm	7.0	23.0	45.0	45.0	
Efficiency	%	95	92	89	89	→ Various lengths and diameters
Max. axial load (dynamic)	N	200	200	200	200	→ Keyways
Max. radial load, 12mm from flange	N	420	630	900	900	→ Flats
Weight	Kg	0.69	0.86	1.08	1.08	→ Centre holes
Gearbox length	mm	50.4	67.5	84.4	84.4	
Gear material		Steel	Steel	Steel	Steel	

¹ S1 duty cycle based on 3000rpm input speed

SD28 (1 Phase, 4 Pole)-PGx52 AC planetary geared motor

230/115 V // 55 W // 13 - 321 rpm // 1.6 - 30.0 Nm

all dimensions in mm



Combination data									
Motor		SD28 50Hz	SD28 50Hz	SD28 50Hz	SD28 50Hz	SD28 60Hz	SD28 60Hz	SD28 60Hz	SD28 60Hz
Phase		1	1	1	1	1	1	1	1
Poles		4	4	4	4	4	4	4	4
Frequency	Hz	50	50	50	50	60	60	60	60
Voltage	V	230/115	230/115	230/115	230/115	230/115	230/115	230/115	230/115
Nominal motor power	W	55	55	55	55	55	55	55	55
Gearbox ratio	:1	5.3	16	62	111	5.3	16	62	111
Nominal speed	rpm	264	88	23	13	321	106	27	15
Nominal torque (S1)	Nm	1.9	5.5	20.7	30.0	1.6	4.5	17.0	30.0

Motor only data			Motor accessories	
Motor	SD28 50Hz	SD28 60Hz		
Phase	1	1	Brake	
Poles	4	4	→ 2.0 Nm	
Frequency	Hz	50	Encoder	
Nominal voltage	V	230/115	N/A	
Nominal power	W	55	Controller	
Nominal speed	rpm	1400	N/A	
Continuous torque (S1)	Nm	0.38		
Weight	Kg	3.6		
Stack length	mm	56		
Motor length	mm	140		
Capacitor	MFD	6.0 / 20.0		

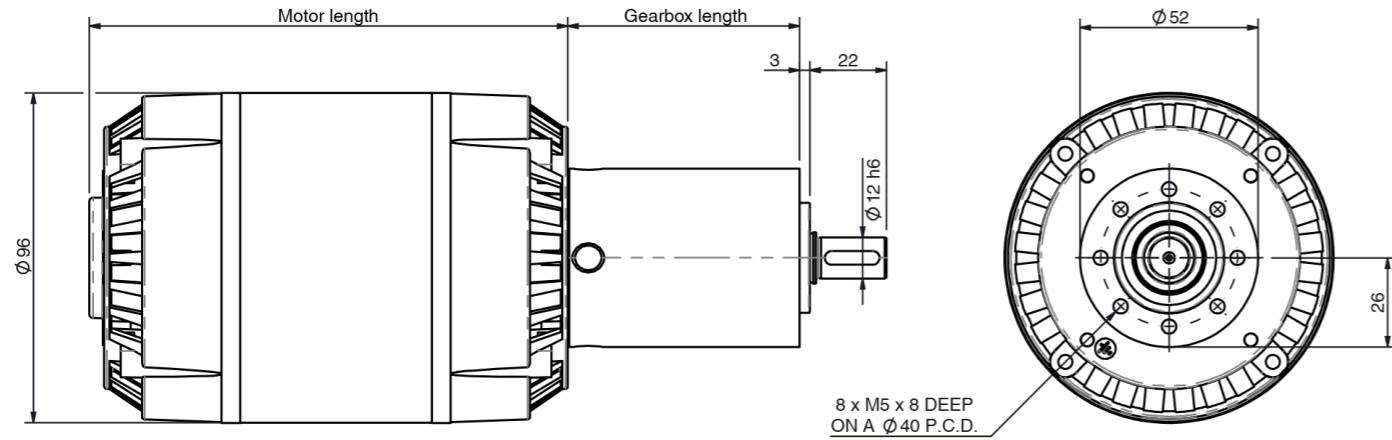
Gearbox only data					Gearbox accessories	
Part number	891042	891043	891044	891047		
Ratio	:1	5.3	16	62	111	Shaft modifications
Stages		1	2	3	3	
Max. continuous torque (S1) ¹	Nm	5.0	15.0	30.0	30.0	
Max. intermittent torque	Nm	7.0	23.0	45.0	45.0	
Efficiency	%	95	92	89	89	→ Various lengths and diameters
Max. axial load (dynamic)	N	200	200	200	200	→ Keyways
Max. radial load, 12mm from flange	N	420	630	900	900	→ Flats
Weight	Kg	0.69	0.86	1.08	1.08	→ Centre holes
Gearbox length	mm	50.4	67.5	84.4	84.4	
Gear material		Steel	Steel	Steel	Steel	

¹ S1 duty cycle based on 3000rpm input speed

SD28 (3 Phase, 2 Pole)-PGx52 AC planetary geared motor

400/230 V // 120 W // 25 - 642 rpm // 1.7 - 30.0 Nm

all dimensions in mm



Combination data									
Motor		SD28 50Hz	SD28 50Hz	SD28 50Hz	SD28 50Hz	SD28 60Hz	SD28 60Hz	SD28 60Hz	SD28 60Hz
Phase		3	3	3	3	3	3	3	3
Poles		2	2	2	2	2	2	2	2
Frequency	Hz	50	50	50	50	60	60	60	60
Voltage	V	400/230	400/230	400/230	400/230	400/230	400/230	400/230	400/230
Nominal motor power	W	120	120	120	120	120	120	120	120
Gearbox ratio	:1	5.3	16	62	111	5.3	16	62	111
Nominal speed	rpm	528	175	45	25	642	213	55	31
Nominal torque (S1)	Nm	2.1	6.0	22.6	30.0	1.7	5.0	18.6	30.0

Motor only data			Motor accessories	
Motor	SD28 50Hz	SD28 60Hz		
Phase	3	3	Brake	
Poles	4	4	→ 2.0 Nm	
Frequency	Hz	50	Encoder	
Nominal voltage	V	400/230	N/A	
Nominal power	W	120	Controller	
Nominal speed	rpm	2800	N/A	
Continuous torque (S1)	Nm	0.41		
Weight	Kg	3.6		
Stack length	mm	56		
Motor length	mm	140		

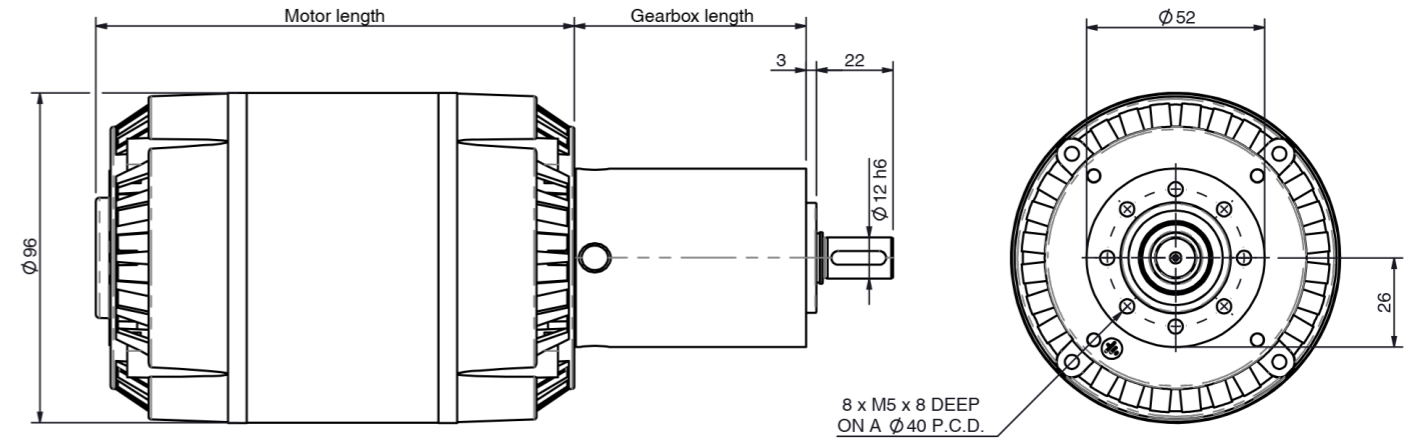
Gearbox only data					Gearbox accessories
Part number	891042	891043	891044	891047	
Ratio	:1	5.3	16	62	Shaft modifications
Stages		1	2	3	→ Various lengths and diameters
Max. continuous torque (S1) ¹	Nm	5.0	15.0	30.0	→ Keyways
Max. intermittent torque	Nm	7.0	23.0	45.0	→ Flats
Efficiency	%	95	92	89	→ Centre holes
Max. axial load (dynamic)	N	200	200	200	
Max. radial load, 12mm from flange	N	420	630	900	
Weight	Kg	0.69	0.86	1.08	
Gearbox length	mm	50.4	67.5	84.4	
Gear material		Steel	Steel	Steel	

¹ S1 duty cycle based on 3000rpm input speed

SD28 (3 Phase, 4 Pole)-PGx52 AC planetary geared motor

400/230 V // 55 W // 13 - 321 rpm // 1.6 - 30.0 Nm

all dimensions in mm



Combination data									
Motor		SD28 50Hz	SD28 50Hz	SD28 50Hz	SD28 50Hz	SD28 60Hz	SD28 60Hz	SD28 60Hz	SD28 60Hz
Phase		3	3	3	3	3	3	3	3
Poles		4	4	4	4	4	4	4	4
Frequency	Hz	50	50	50	50	60	60	60	60
Voltage	V	400/230	400/230	400/230	400/230	400/230	400/230	400/230	400/230
Nominal motor power	W	55	55	55	55	55	55	55	55
Gearbox ratio	:1	5.3	16	62	111	5.3	16	62	111
Nominal speed	rpm	264	88	23	13	321	106	27	15
Nominal torque (S1)	Nm	1.9	5.5	20.7	30.0	1.6	4.5	17.0	30.0

Motor only data			Motor accessories	
Motor	SD28 50Hz	SD28 60Hz		
Phase	3	3	Brake	
Poles	4	4	→ 2.0 Nm	
Frequency	Hz	50	Encoder	
Nominal voltage	V	400/230	N/A	
Nominal power	W	55	Controller	
Nominal speed	rpm	1400	N/A	
Continuous torque (S1)	Nm	0.38		
Weight	Kg	3.6		
Stack length	mm	56		
Motor length	mm	140		

Gearbox only data					Gearbox accessories
Part number	891042	891043	891044	891047	
Ratio	:1	5.3	16	62	Shaft modifications
Stages		1	2	3	→ Various lengths and diameters
Max. continuous torque (S1) ¹	Nm	5.0	15.0	30.0	→ Keyways
Max. intermittent torque	Nm	7.0	23.0	45.0	→ Flats
Efficiency	%	95	92	89	→ Centre holes
Max. axial load (dynamic)	N	200	200	200	
Max. radial load, 12mm from flange	N	420	630	900	
Weight	Kg	0.69	0.86	1.08	
Gearbox length	mm	50.4	67.5	84.4	
Gear material		Steel	Steel	Steel	

¹ S1 duty cycle based on 3000rpm input speed



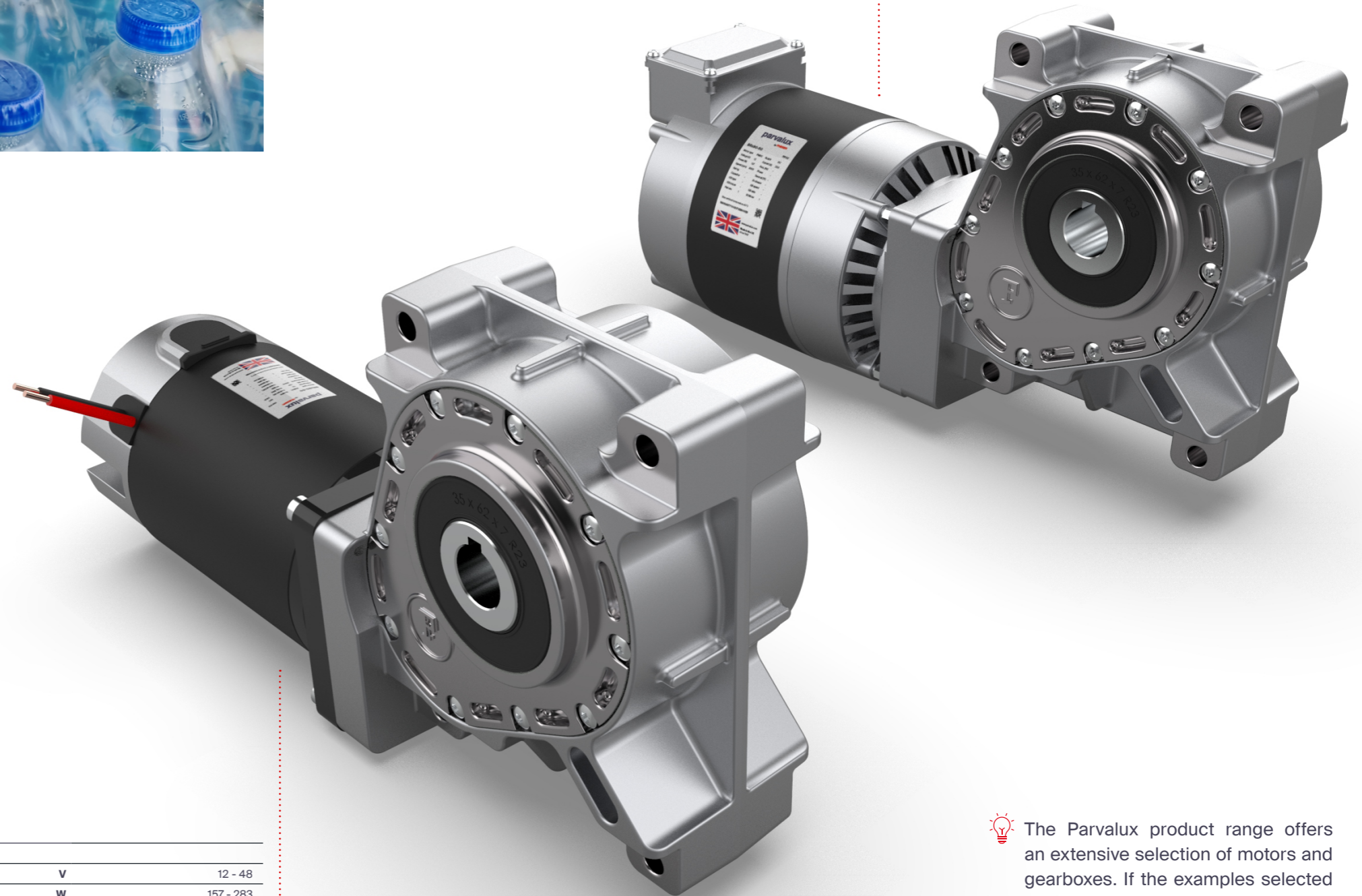
Shrink wrapping machines


Shrink wrapping systems rely on synchronised motion across film dispensers, sealing elements, and conveyor belts. Parvalux geared motors deliver the torque and timing precision required to ensure smooth film application, consistent sealing, and controlled movement through heat tunnels.

With high thermal stability and long service life, our motors are ideal for continuous operation in high-speed wrapping environments.

BRx90-GB65		
Voltage	V	12 - 48
Power	W	157 - 283
Speed	rpm	16 - 150
Nominal torque	Nm	8.1 - 64.8
Intermittent torque	Nm	19.0 - 108.0
<i>Detail specification available on page 19</i>		

SD48-GB65		
Frequency	Hz	50 - 60
Voltage	V	115 - 400
Power	W	55 - 250
Speed	rpm	9 - 170
Continuous torque	Nm	8.6 - 93.6
<i>Detail specification available on pages 15 - 18</i>		

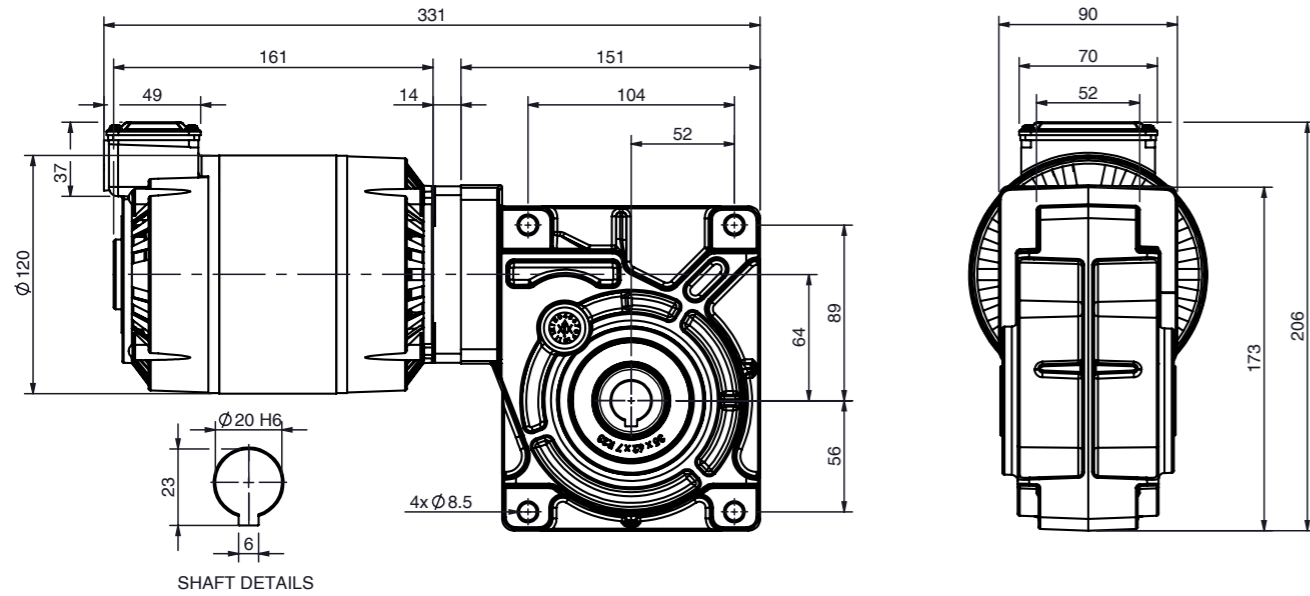


 The Parvalux product range offers an extensive selection of motors and gearboxes. If the examples selected within this section do not meet your specification please get in touch with your local sales engineer to discuss your requirements.

SD48 (1 Phase, 2 Pole)-GB65 AC right-angle geared motor

230/115 V // 190 W // 18-170 rpm // 8.6-46.7 Nm

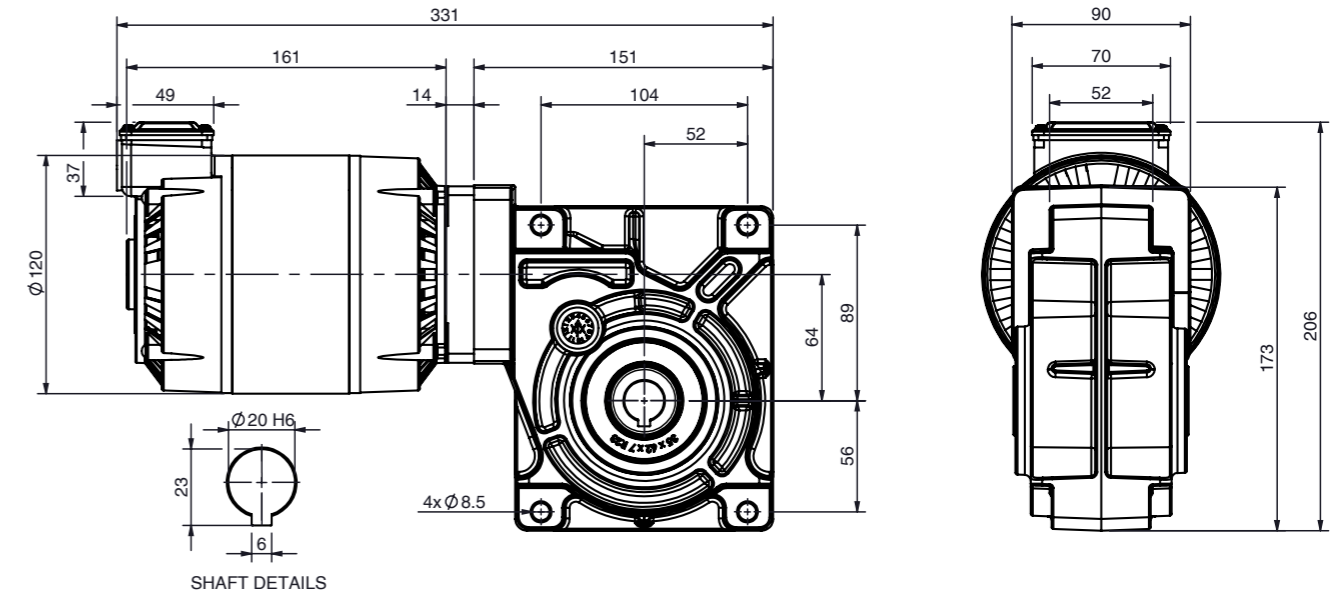
all dimensions in mm



SD48 (1 Phase, 4 Pole)-GB65 AC right-angle geared motor

230/115 V // 150 W // 9-85 rpm // 13.6-73.7 Nm

all dimensions in mm



Combination data											
Motor		SD48 50Hz	SD48 50Hz	SD48 50Hz	SD48 50Hz	SD48 50Hz	SD48 60Hz	SD48 60Hz	SD48 60Hz	SD48 60Hz	SD48 60Hz
Phase		1	1	1	1	1	1	1	1	1	1
Poles		2	2	2	2	2	2	2	2	2	2
Frequency	Hz	50	50	50	50	50	60	60	60	60	60
Voltage	V	230/115	230/115	230/115	230/115	230/115	230/115	230/115	230/115	230/115	230/115
Nominal motor power	W	190	190	190	190	190	190	190	190	190	190
Gearbox ratio	:1	20	40	80	120	160	20	40	80	120	160
Nominal speed	rpm	140	70	35	23	18	170	85	43	28	21
Nominal torque (S1)	Nm	10.5	19.7	36.3	46.7	44.6	8.6	16.2	29.9	38.4	36.7

Motor only data			Motor accessories			
Motor		SD48 50Hz	SD48 60Hz			
Phase		1	1	Brake		
Poles		2	2	→ 2.0 Nm		
Frequency	Hz	50	60	Encoder		
Nominal voltage	V	230/115	230/115	N/A		
Nominal power	W	190	190	Controller		
Nominal speed	rpm	2800	3400	N/A		
Continuous torque (S1)	Nm	0.65	0.53			
Weight	Kg	6.5	6.5			
Stack length	mm	56	56			
Motor length	mm	170	170			
Capacitor	MFD	45.0 / 180.0	45.0 / 180.0			

Gearbox only data						Gearbox accessories	
Part number		854060	853270	827936	827934	827943	Shaft modifications → Various lengths and diameters → Keyways → Flats → Centre holes
Ratio	:1	20	40	80	120	160	
Max. continuous torque (S1) ²	Nm	120.0	120.0	120.0	120.0	120.0	
Max. intermittent torque	Nm	300.0	300.0	300.0	300.0	300.0	
Efficiency	%	81	76	70	60	43	
Max. axial load (dynamic)	N	1750	1750	1750	1750	1750	
Max. radial load, 12mm from flange	N	2335	2335	2335	2335	2335	
Weight	Kg	3.5	3.5	3.5	3.5	3.5	
Gear material ³		S / B	S / B	S / B	S / B	S / B	

² S1 duty cycle based on 3000rpm input speed ³ Gear material: S = Steel / B = Bronze

Combination data											
Motor		SD48 50Hz	SD48 50Hz	SD48 50Hz	SD48 50Hz	SD48 50Hz	SD48 60Hz	SD48 60Hz	SD48 60Hz	SD48 60Hz	SD48 60Hz
Phase		1	1	1	1	1	1	1	1	1	1
Poles		4	4	4	4	4	4	4	4	4	4
Frequency	Hz	50	50	50	50	50	60	60	60	60	60
Voltage	V	230/115	230/115	230/115	230/115	230/115	230/115	230/115	230/115	230/115	230/115
Nominal motor power	W	150	150	150	150	150	150	150	150	150	150
Gearbox ratio	:1	20	40	80	120	160	20	40	80	120	160
Nominal speed	rpm	70	35	18	12	9	85	43	21	14	11
Nominal torque (S1)	Nm	16.6	31.1	57.3	73.7	70.4	13.6	25.6	47.2	60.7	58.0

Motor only data			Motor accessories			
Motor		SD48 50Hz	SD48 60Hz			
Phase		1	1	Brake		
Poles		4	4	→ 2.0 Nm		
Frequency	Hz	50	60	Encoder		
Nominal voltage	V	230/115	230/115	N/A		
Nominal power	W	150	150	Controller		
Nominal speed	rpm	1400	1700	N/A		
Continuous torque (S1)	Nm	1.00	0.84			
Weight	Kg	6.5	6.5			
Stack length	mm	56	56			
Motor length	mm	170	170			
Capacitor	MFD	45.0 / 180.0	45.0 / 180.0			

Gearbox only data						Gearbox accessories	
Part number		854060	853270	827936	827934	827943	Shaft modifications → Various lengths and diameters → Keyways → Flats → Centre holes
Ratio	:1	20	40	80	120	160	
Max. continuous torque (S1) ²	Nm	120.0	120.0	120.0	120.0	120.0	
Max. intermittent torque	Nm	300.0	300.0	300.0	300.0	300.0	
Efficiency	%	81	76	70	60	43	
Max. axial load (dynamic)	N	1750	1750	1750	1750	1750	
Max. radial load, 12mm from flange	N	2335	2335	2335	2335	2335	
Weight	Kg	3.5	3.5	3.5	3.5	3.5	
Gear material ³		S / B	S / B	S / B	S / B	S / B	

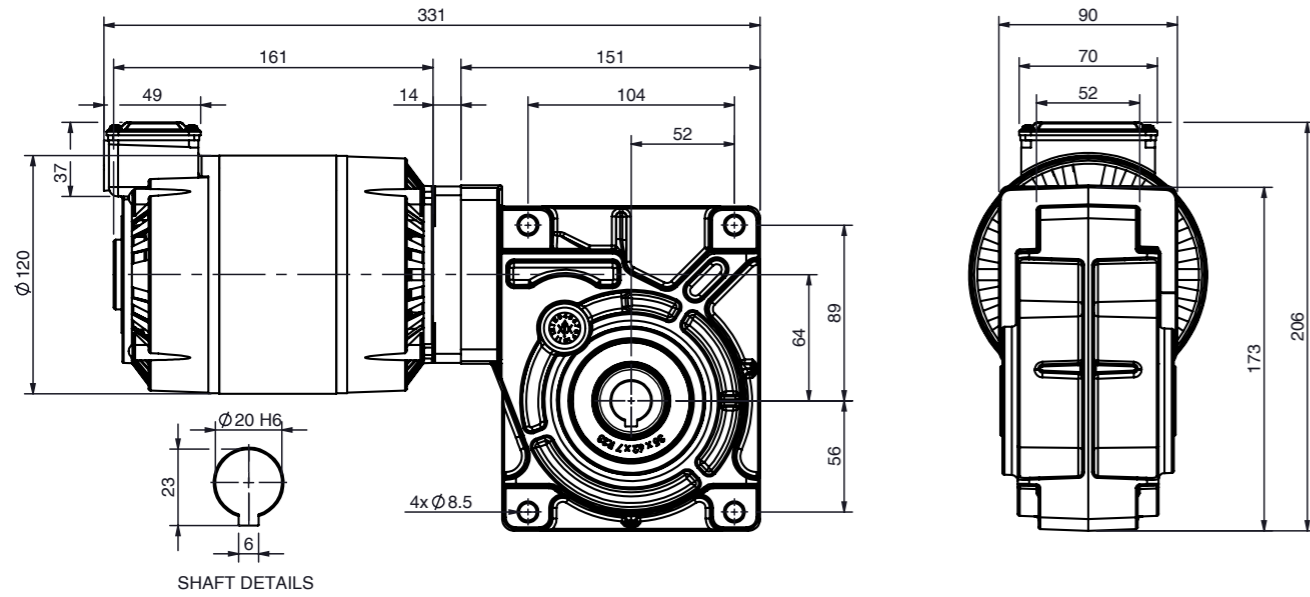
² S1 duty cycle based on 3000rpm input speed ³ Gear material: S = Steel / B = Bronze

SD48 (3 Phase, 2 Pole)-GB65

AC right-angle geared motor

400/230 V // 250 W // 18 - 170 rpm // 11.4 - 61.4 Nm

all dimensions in mm

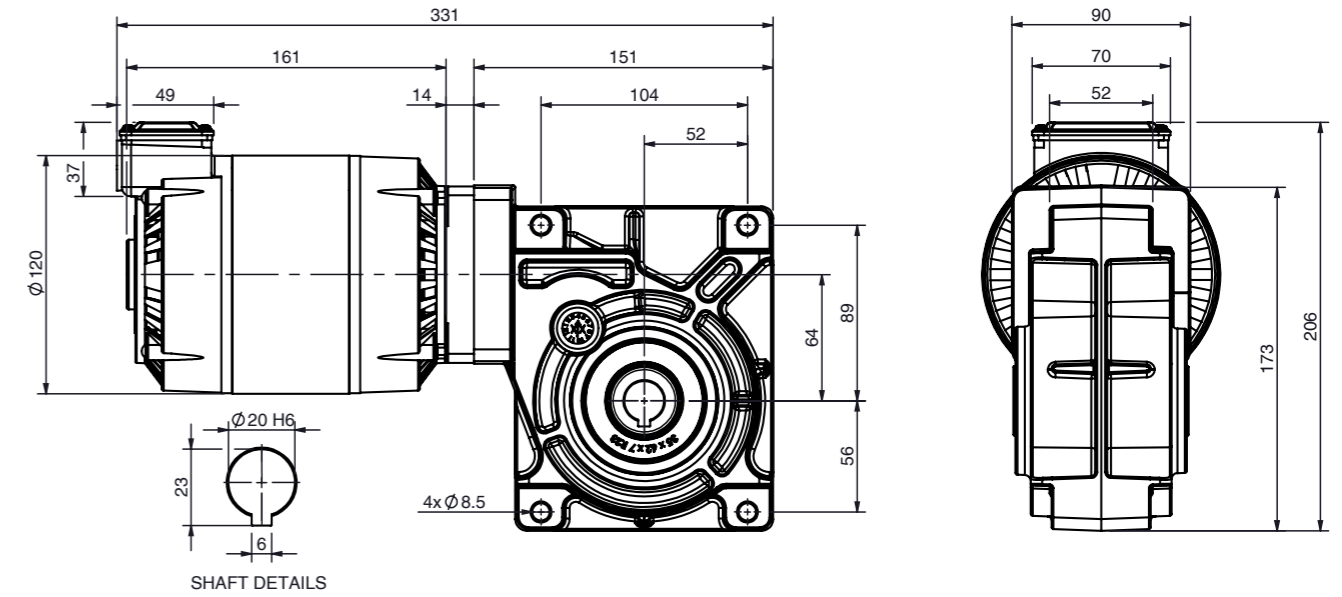


SD48 (3 Phase, 4 Pole)-GB65

AC right-angle geared motor

400/230 V // 190 W // 9 - 85 rpm // 17.3 - 93.3 Nm

all dimensions in mm



Combination data											
Motor		SD48 50Hz	SD48 50Hz	SD48 50Hz	SD48 50Hz	SD48 50Hz	SD48 60Hz	SD48 60Hz	SD48 60Hz	SD48 60Hz	SD48 60Hz
Phase		3	3	3	3	3	3	3	3	3	3
Poles		2	2	2	2	2	2	2	2	2	2
Frequency	Hz	50	50	50	50	50	60	60	60	60	60
Voltage	V	400/230	400/230	400/230	400/230	400/230	400/230	400/230	400/230	400/230	400/230
Nominal motor power	W	250	250	250	250	250	250	250	250	250	250
Gearbox ratio	:1	20	40	80	120	160	20	40	80	120	160
Nominal speed	rpm	140	70	35	23	18	170	85	43	28	21
Nominal torque (S1)	Nm	13.8	25.9	47.7	61.4	58.7	11.4	21.3	39.3	50.6	48.3

Motor only data			Motor accessories	
Motor	SD48 50Hz	SD48 60Hz		
Phase	3	3	Brake	
Poles	4	4	→ 2.0 Nm	
Frequency	Hz	50	Encoder	
Nominal voltage	V	400/230	N/A	
Nominal power	W	250	Controller	
Nominal speed	rpm	2800	N/A	
Continuous torque (S1)	Nm	0.85		
Weight	Kg	6.5		
Stack length	mm	56		
Motor length	mm	170		

Gearbox only data						Gearbox accessories	
Part number	854060	853270	827936	827934	827943		
Ratio	:1	20	40	80	120	160	Shaft modifications → Various lengths and diameters → Keyways → Flats → Centre holes
Max. continuous torque (S1) ²	Nm	120.0	120.0	120.0	120.0	120.0	
Max. intermittent torque	Nm	300.0	300.0	300.0	300.0	300.0	
Efficiency	%	81	76	70	60	43	
Max. axial load (dynamic)	N	1750	1750	1750	1750	1750	
Max. radial load, 12mm from flange	N	2335	2335	2335	2335	2335	
Weight	Kg	3.5	3.5	3.5	3.5	3.5	
Gear material ³		S / B	S / B	S / B	S / B	S / B	

² S1 duty cycle based on 3000rpm input speed ³ Gear material: S = Steel / B = Bronze

Combination data											
Motor		SD48 50Hz	SD48 50Hz	SD48 50Hz	SD48 50Hz	SD48 50Hz	SD48 60Hz	SD48 60Hz	SD48 60Hz	SD48 60Hz	SD48 60Hz
Phase		3	3	3	3	3	3	3	3	3	3
Poles		4	4	4	4	4	4	4	4	4	4
Frequency	Hz	50	50	50	50	50	60	60	60	60	60
Voltage	V	400/230	400/230	400/230	400/230	400/230	400/230	400/230	400/230	400/230	400/230
Nominal motor power	W	190	190	190	190	190	190	190	190	190	190
Gearbox ratio	:1	20	40	80	120	160	20	40	80	120	160
Nominal speed	rpm	70	35	18	12	9	85	43	21	14	11
Nominal torque (S1)	Nm	21.0	39.4	72.6	93.3	89.2	17.3	32.4	59.8	76.8	73.4

Motor only data			Motor accessories	
Motor	SD48 50Hz	SD48 60Hz		
Phase	3	3	Brake	
Poles	4	4	→ 2.0 Nm	
Frequency	Hz	50	Encoder	
Nominal voltage	V	400/230	N/A	
Nominal power	W	190	Controller	
Nominal speed	rpm	1400	N/A	
Continuous torque (S1)	Nm	1.30		
Weight	Kg	6.5		
Stack length	mm	56		
Motor length	mm	170		

Gearbox only data						Gearbox accessories	
Part number	854060	853270	827936	827934	827943		
Ratio	:1	20	40	80	120	160	Shaft modifications → Various lengths and diameters → Keyways → Flats → Centre holes
Max. continuous torque (S1) ²	Nm	120.0	120.0	120.0	120.0	120.0	
Max. intermittent torque	Nm	300.0	300.0	300.0	300.0	300.0	
Efficiency	%	81	76	70	60	43	
Max. axial load (dynamic)	N	1750	1750	1750	1750	1750	
Max. radial load, 12mm from flange	N	2335	2335	2335	2335	2335	
Weight	Kg	3.5	3.5	3.5	3.5	3.5	
Gear material ³		S / B	S / B	S / B	S / B	S / B	

² S1 duty cycle based on 3000rpm input speed ³ Gear material: S = Steel / B = Bronze



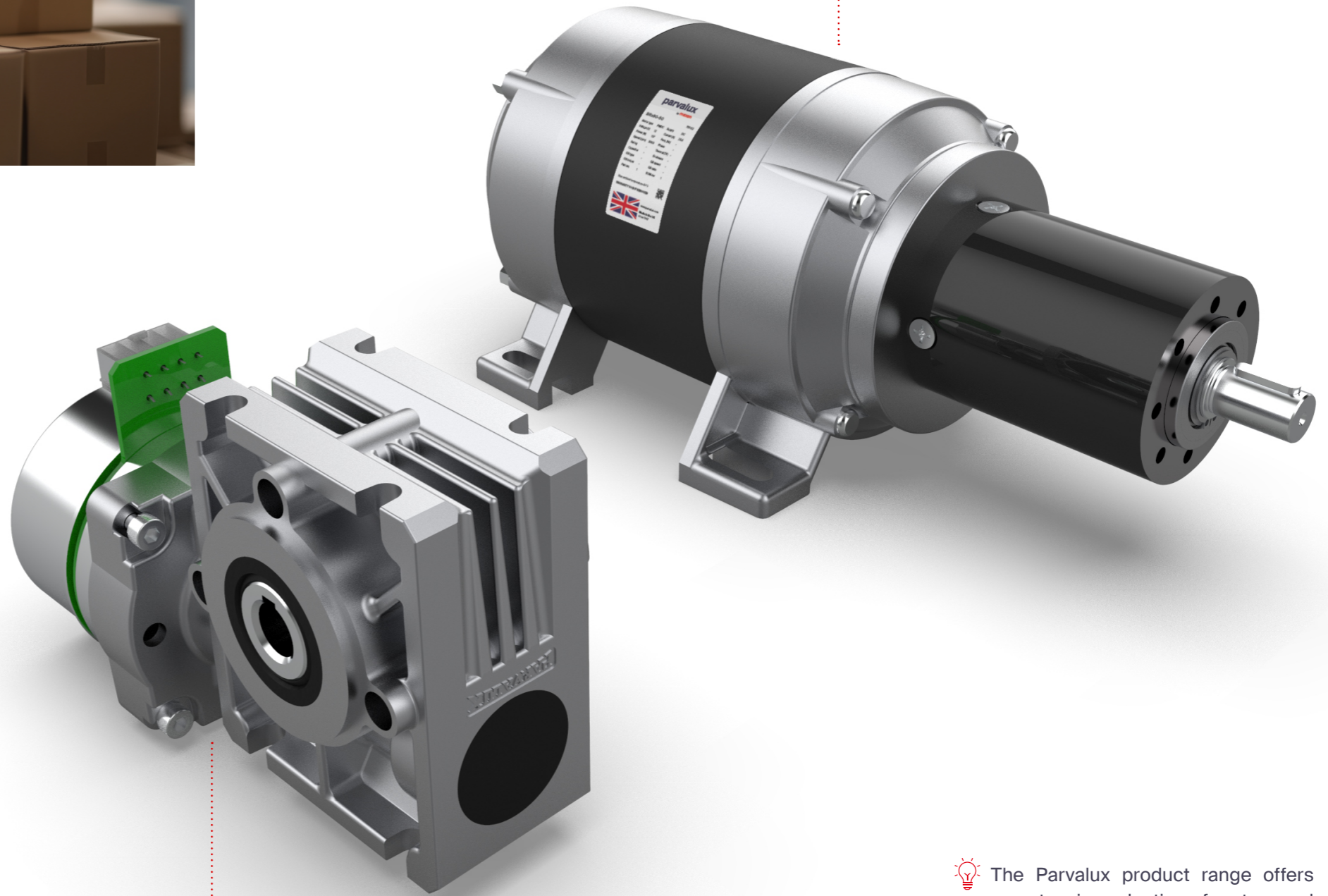
On-demand packaging


Parvalux electric motors play a crucial role in on-demand packaging machines by powering key mechanical components that automate the packaging process. They drive conveyor belts, rollers, cutting blades, sealing units, and folding mechanisms with precision and efficiency.

By enabling real-time adjustments in speed, torque, and positioning, our solutions allow packaging machines to adapt quickly to different product sizes and packaging formats, ensuring consistent quality and minimal material waste.

EC60 flat-GB28		
Voltage	V	24
Power	W	100
Speed	rpm	62 - 249
Nominal torque	Nm	3.0 - 5.0
<i>Detail specification available on page 27</i>		

SD28-PGx52		
Frequency	Hz	50 - 60
Voltage	V	115 - 400
Power	W	55 - 120
Speed	rpm	13 - 642
Nominal torque	Nm	1.4 - 30.0
<i>Detail specification available on pages 23 - 26</i>		

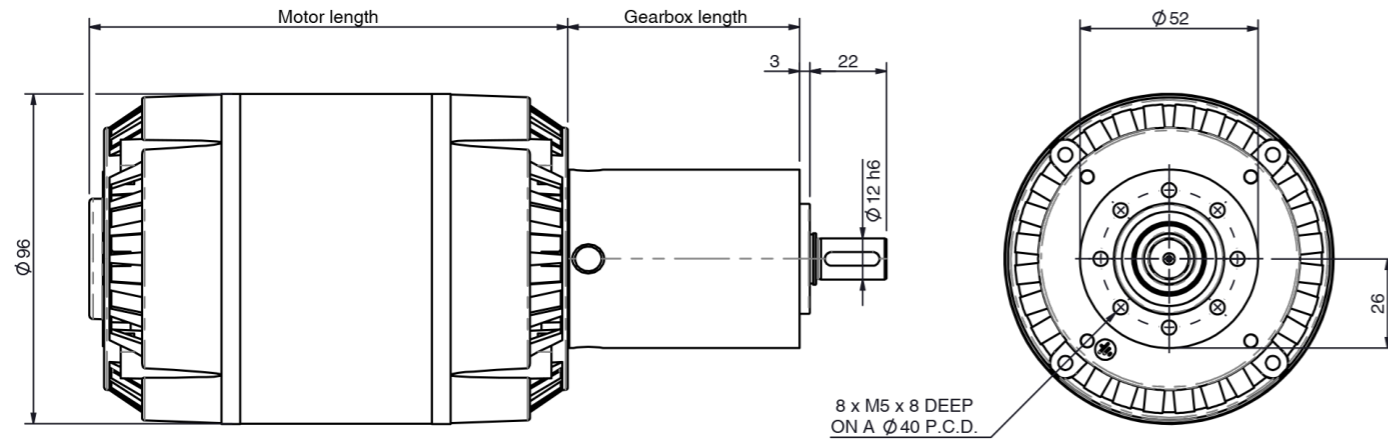


 The Parvalux product range offers an extensive selection of motors and gearboxes. If the examples selected within this section do not meet your specification please get in touch with your local sales engineer to discuss your requirements.

SD28 (1 Phase, 2 Pole)-PGx52 AC planetary geared motor

230/115 V // 100 W // 25 - 642 rpm // 1.4 - 30.0 Nm

all dimensions in mm



Combination data									
Motor		SD28 50Hz	SD28 50Hz	SD28 50Hz	SD28 50Hz	SD28 60Hz	SD28 60Hz	SD28 60Hz	SD28 60Hz
Phase		1	1	1	1	1	1	1	1
Poles		2	2	2	2	2	2	2	2
Frequency	Hz	50	50	50	50	60	60	60	60
Voltage	V	230/115	230/115	230/115	230/115	230/115	230/115	230/115	230/115
Nominal motor power	W	100	100	100	100	100	100	100	100
Gearbox ratio	:1	5.3	16	62	111	5.3	16	62	111
Nominal speed	rpm	528	175	45	25	642	213	55	31
Nominal torque (S1)	Nm	1.7	5.0	18.8	30.0	1.4	4.1	15.5	27.7

Motor only data			Motor accessories	
Motor	SD28 50Hz	SD28 60Hz		
Phase	1	1	Brake	
Poles	2	2	→ 2.0 Nm	
Frequency	Hz	50	Encoder	
Nominal voltage	V	230/115	N/A	
Nominal power	W	100	Controller	
Nominal speed	rpm	2800	N/A	
Continuous torque (S1)	Nm	0.34		
Weight	Kg	3.6		
Stack length	mm	56		
Motor length	mm	140		
Capacitor	MFD	6.0 / 20.0		

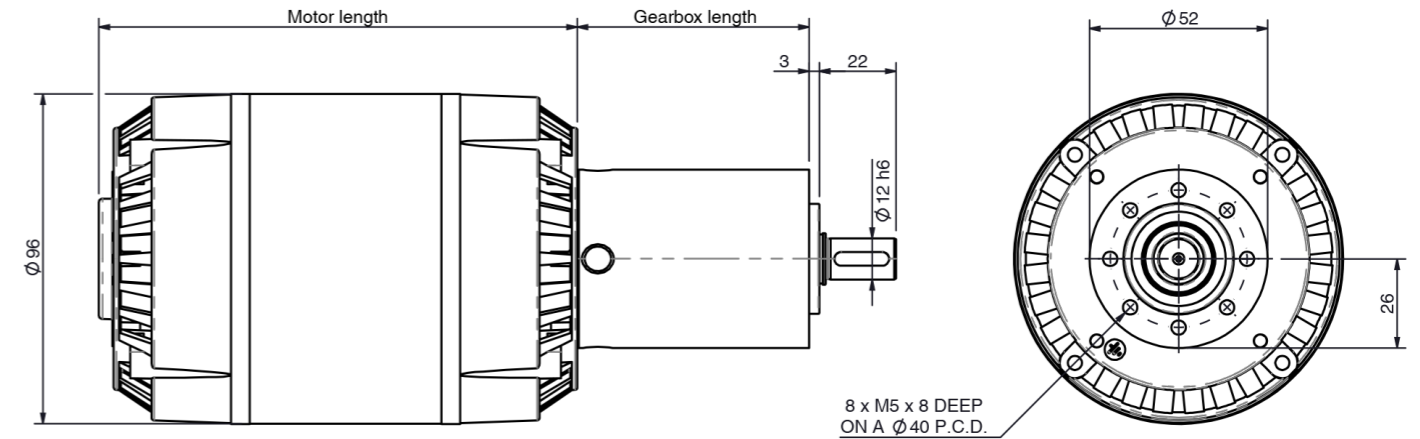
Gearbox only data					Gearbox accessories	
Part number	891042	891043	891044	891047		
Ratio	:1	5.3	16	62	111	Shaft modifications
Stages		1	2	3	3	→ Various lengths and diameters
Max. continuous torque (S1) ¹	Nm	5.0	15.0	30.0	30.0	→ Keyways
Max. intermittent torque	Nm	7.0	23.0	45.0	45.0	→ Flats
Efficiency	%	95	92	89	89	→ Centre holes
Max. axial load (dynamic)	N	200	200	200	200	
Max. radial load, 12mm from flange	N	420	630	900	900	
Weight	Kg	0.69	0.86	1.08	1.08	
Gearbox length	mm	50.4	67.5	84.4	84.4	
Gear material		Steel	Steel	Steel	Steel	

¹ S1 duty cycle based on 3000rpm input speed

SD28 (1 Phase, 4 Pole)-PGx52 AC planetary geared motor

230/115 V // 55 W // 13 - 321 rpm // 1.6 - 30.0 Nm

all dimensions in mm



Combination data									
Motor		SD28 50Hz	SD28 50Hz	SD28 50Hz	SD28 50Hz	SD28 60Hz	SD28 60Hz	SD28 60Hz	SD28 60Hz
Phase		1	1	1	1	1	1	1	1
Poles		4	4	4	4	4	4	4	4
Frequency	Hz	50	50	50	50	60	60	60	60
Voltage	V	230/115	230/115	230/115	230/115	230/115	230/115	230/115	230/115
Nominal motor power	W	55	55	55	55	55	55	55	55
Gearbox ratio	:1	5.3	16	62	111	5.3	16	62	111
Nominal speed	rpm	264	88	23	13	321	106	27	15
Nominal torque (S1)	Nm	1.9	5.5	20.7	30.0	1.6	4.5	17.0	30.0

Motor only data			Motor accessories	
Motor	SD28 50Hz	SD28 60Hz		
Phase	1	1	Brake	
Poles	4	4	→ 2.0 Nm	
Frequency	Hz	50	Encoder	
Nominal voltage	V	230/115	N/A	
Nominal power	W	55	Controller	
Nominal speed	rpm	1400	N/A	
Continuous torque (S1)	Nm	0.38		
Weight	Kg	3.6		
Stack length	mm	56		
Motor length	mm	140		
Capacitor	MFD	6.0 / 20.0		

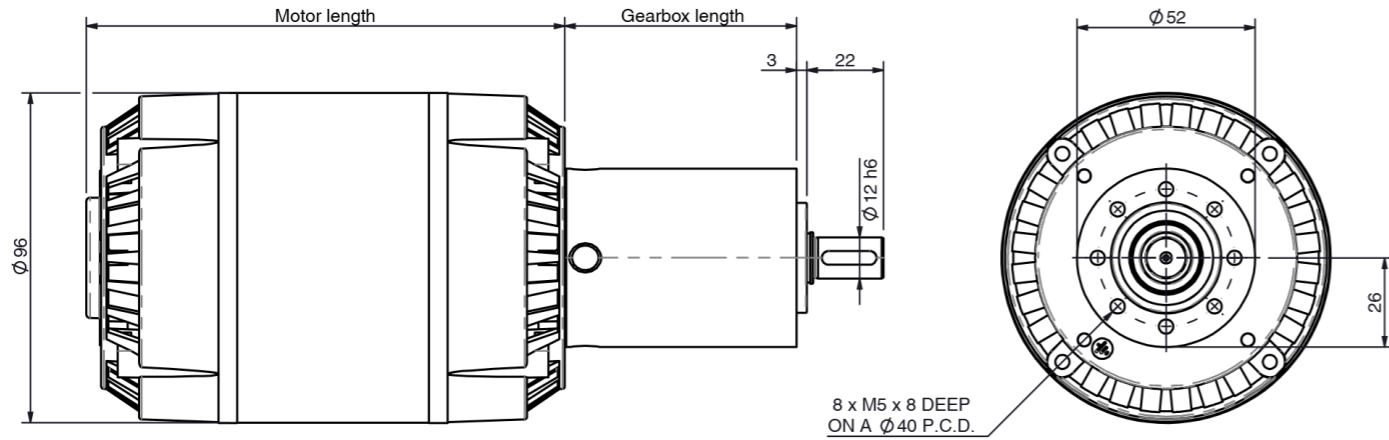
Gearbox only data					Gearbox accessories	
Part number	891042	891043	891044	891047		
Ratio	:1	5.3	16	62	111	Shaft modifications
Stages		1	2	3	3	→ Various lengths and diameters
Max. continuous torque (S1) ¹	Nm	5.0	15.0	30.0	30.0	→ Keyways
Max. intermittent torque	Nm	7.0	23.0	45.0	45.0	→ Flats
Efficiency	%	95	92	89	89	→ Centre holes
Max. axial load (dynamic)	N	200	200	200	200	
Max. radial load, 12mm from flange	N	420	630	900	900	
Weight	Kg	0.69	0.86	1.08	1.08	
Gearbox length	mm	50.4	67.5	84.4	84.4	
Gear material		Steel	Steel	Steel	Steel	

¹ S1 duty cycle based on 3000rpm input speed

SD28 (3 Phase, 2 Pole)-PGx52 AC planetary geared motor

400/230 V // 120 W // 25 - 642 rpm // 1.7 - 30.0 Nm

all dimensions in mm



Combination data									
Motor		SD28 50Hz	SD28 50Hz	SD28 50Hz	SD28 50Hz	SD28 60Hz	SD28 60Hz	SD28 60Hz	SD28 60Hz
Phase		3	3	3	3	3	3	3	3
Poles		2	2	2	2	2	2	2	2
Frequency	Hz	50	50	50	50	60	60	60	60
Voltage	V	400/230	400/230	400/230	400/230	400/230	400/230	400/230	400/230
Nominal motor power	W	120	120	120	120	120	120	120	120
Gearbox ratio	:1	5.3	16	62	111	5.3	16	62	111
Nominal speed	rpm	528	175	45	25	642	213	55	31
Nominal torque (S1)	Nm	2.1	6.0	22.6	30.0	1.7	5.0	18.6	30.0

Motor only data			Motor accessories	
Motor		SD28 50Hz	SD28 60Hz	
Phase		3	3	Brake
Poles		4	4	→ 2.0 Nm
Frequency	Hz	50	60	Encoder
Nominal voltage	V	400/230	400/230	N/A
Nominal power	W	120	120	Controller
Nominal speed	rpm	2800	3400	N/A
Continuous torque (S1)	Nm	0.41	0.34	
Weight	Kg	3.6	3.6	
Stack length	mm	56	56	
Motor length	mm	140	140	

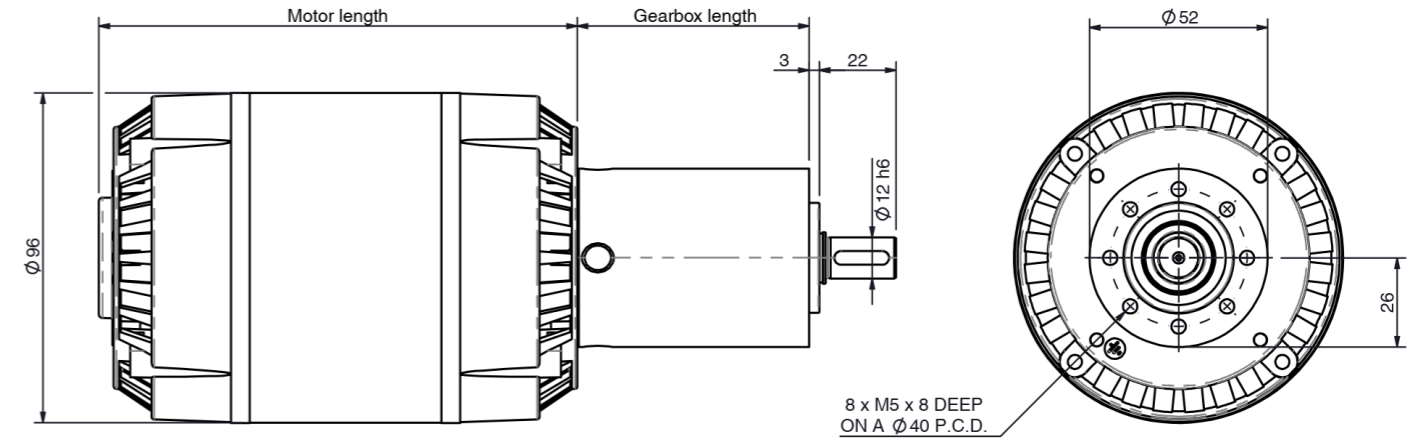
Gearbox only data						Gearbox accessories	
Part number		891042	891043	891044	891047		
Ratio	:1	5.3	16	62	111	Shaft modifications	
Stages		1	2	3	3	→ Various lengths and diameters	
Max. continuous torque (S1) ¹	Nm	5.0	15.0	30.0	30.0	→ Keyways	
Max. intermittent torque	Nm	7.0	23.0	45.0	45.0	→ Flats	
Efficiency	%	95	92	89	89	→ Centre holes	
Max. axial load (dynamic)	N	200	200	200	200		
Max. radial load, 12mm from flange	N	420	630	900	900		
Weight	Kg	0.69	0.86	1.08	1.08		
Gearbox length	mm	50.4	67.5	84.4	84.4		
Gear material		Steel	Steel	Steel	Steel		

¹ S1 duty cycle based on 3000rpm input speed

SD28 (3 Phase, 4 Pole)-PGx52 AC planetary geared motor

400/230 V // 55 W // 13 - 321 rpm // 1.6 - 30.0 Nm

all dimensions in mm



Combination data									
Motor		SD28 50Hz	SD28 50Hz	SD28 50Hz	SD28 50Hz	SD28 60Hz	SD28 60Hz	SD28 60Hz	SD28 60Hz
Phase		3	3	3	3	3	3	3	3
Poles		4	4	4	4	4	4	4	4
Frequency	Hz	50	50	50	50	60	60	60	60
Voltage	V	400/230	400/230	400/230	400/230	400/230	400/230	400/230	400/230
Nominal motor power	W	55	55	55	55	55	55	55	55
Gearbox ratio	:1	5.3	16	62	111	5.3	16	62	111
Nominal speed	rpm	264	88	23	13	321	106	27	15
Nominal torque (S1)	Nm	1.9	5.5	20.7	30.0	1.6	4.5	17.0	30.0

Motor only data			Motor accessories	
Motor		SD28 50Hz	SD28 60Hz	
Phase		3	3	Brake
Poles		4	4	→ 2.0 Nm
Frequency	Hz	50	60	Encoder
Nominal voltage	V	400/230	400/230	N/A
Nominal power	W	55	55	Controller
Nominal speed	rpm	1400	1700	N/A
Continuous torque (S1)	Nm	0.38	0.31	
Weight	Kg	3.6	3.6	
Stack length	mm	56	56	
Motor length	mm	140	140	

Gearbox only data						Gearbox accessories	
Part number		891042	891043	891044	891047		
Ratio	:1	5.3	16	62	111	Shaft modifications	
Stages		1	2	3	3	→ Various lengths and diameters	
Max. continuous torque (S1) ¹	Nm	5.0	15.0	30.0	30.0	→ Keyways	
Max. intermittent torque	Nm	7.0	23.0	45.0	45.0	→ Flats	
Efficiency	%	95	92	89	89	→ Centre holes	
Max. axial load (dynamic)	N	200	200	200	200		
Max. radial load, 12mm from flange	N	420	630	900	900		
Weight	Kg	0.69	0.86	1.08	1.08		
Gearbox length	mm	50.4	67.5	84.4	84.4		
Gear material		Steel	Steel	Steel	Steel		

¹ S1 duty cycle based on 3000rpm input speed



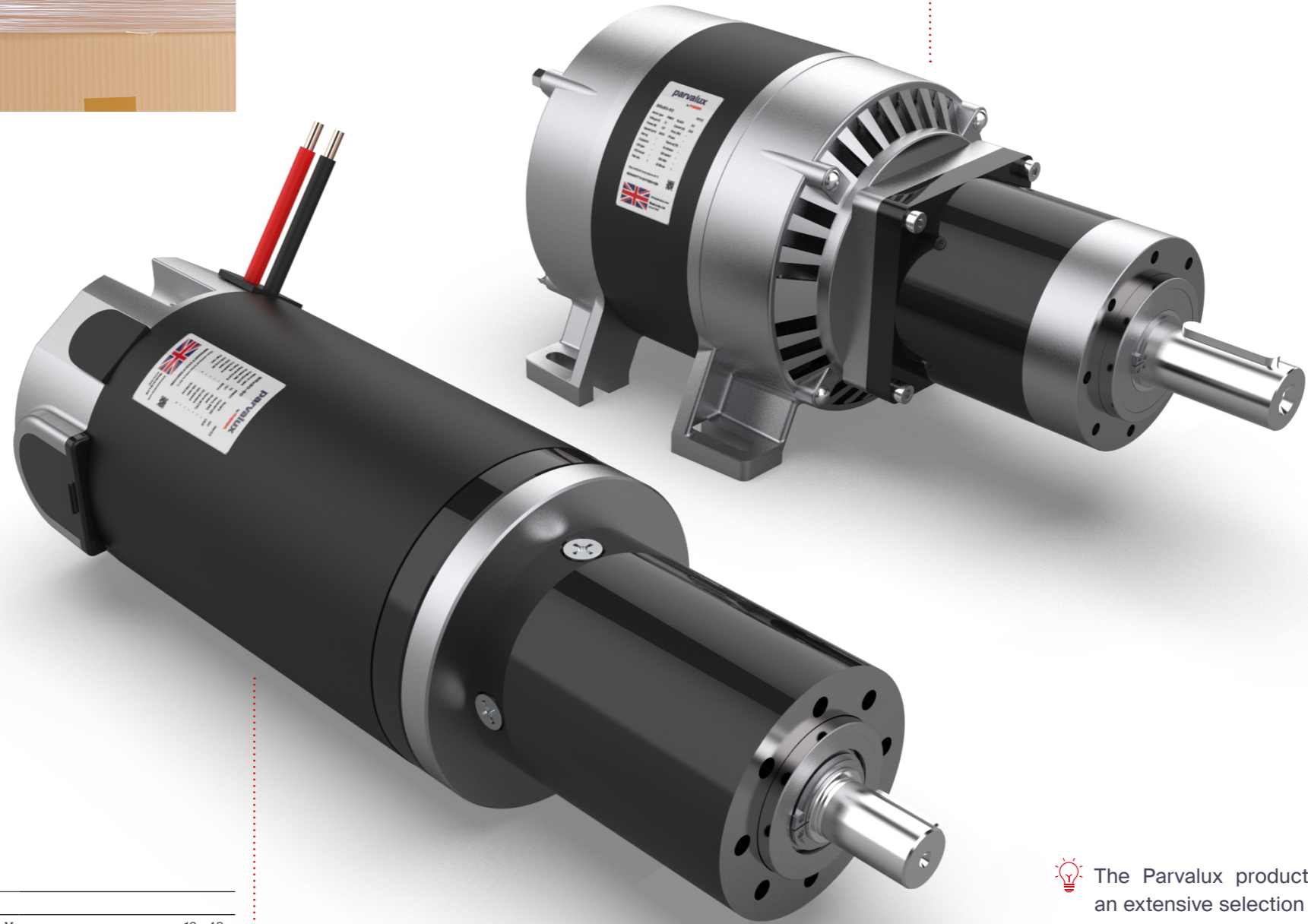
Case sealing machines


Case sealing machines require dependable motor performance to apply consistent pressure and cleanly seal cartons with tape or glue. Parvalux motors drive flap folders, tape heads, and side conveyors with quiet efficiency and long-term reliability.

Compact and easy to integrate, our motor solutions are designed to handle high output with minimal maintenance - making them ideal for busy packing stations that run for extended periods of time.

BRx70-PGx52		
Voltage	V	12 - 48
Power	W	79 - 157
Speed	rpm	27 - 566
Nominal torque	Nm	1.3 - 30.0
Intermittent torque	Nm	2.3 - 45.0
Detail specification available on page 35		

SD13-PGx70		
Frequency	Hz	50 - 60
Voltage	V	115 - 400
Power	W	100 - 190
Speed	rpm	32 - 872
Continuous torque	Nm	1.9 - 30.0
Detail specification available on pages 31 - 34		



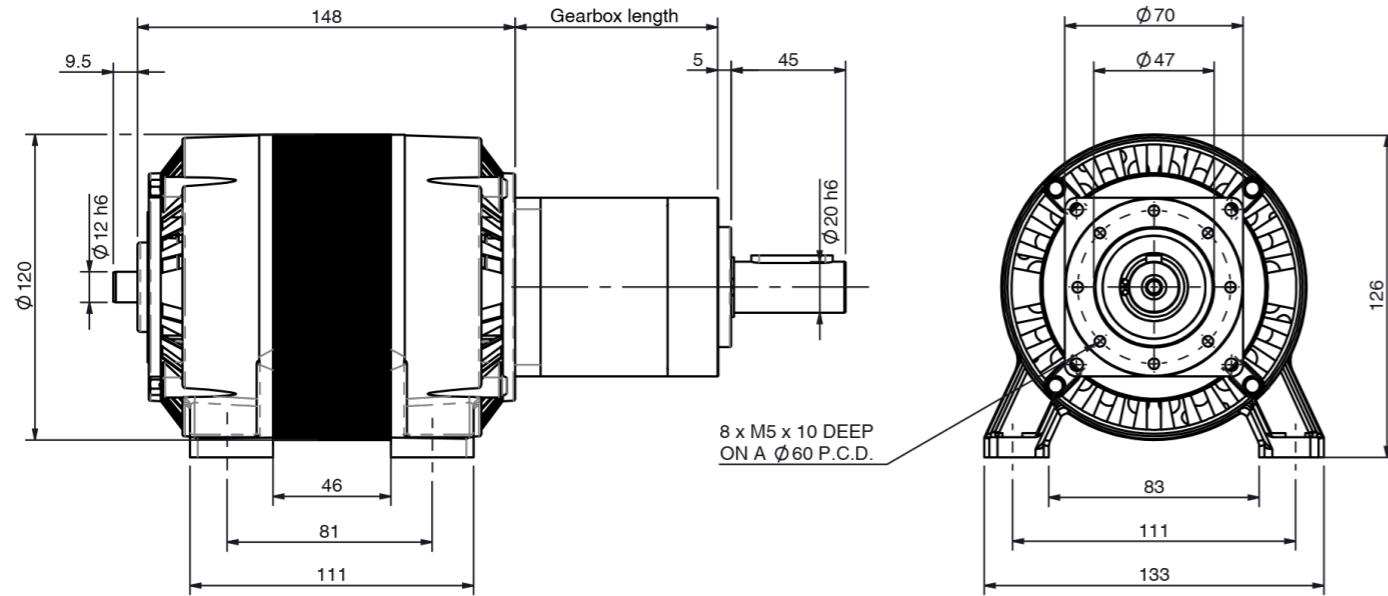
 The Parvalux product range offers an extensive selection of motors and gearboxes. If the examples selected within this section do not meet your specification please get in touch with your local sales engineer to discuss your requirements.

SD13 (1 Phase, 2 Pole)-PGx70

230/115 V // 150 W // 64 - 872 rpm // 1.6 - 20.7 Nm

AC planetary geared motor

all dimensions in mm



Combination data											
Motor		SD13 50Hz	SD13 50Hz	SD13 50Hz	SD13 50Hz	SD13 50Hz	SD13 60Hz	SD13 60Hz	SD13 60Hz	SD13 60Hz	SD13 60Hz
Phase		1	1	1	1	1	1	1	1	1	1
Poles		2	2	2	2	2	2	2	2	2	2
Frequency	Hz	50	50	50	50	50	60	60	60	60	60
Voltage	V	230/115	230/115	230/115	230/115	230/115	230/115	230/115	230/115	230/115	230/115
Nominal motor power	W	150	150	150	150	150	150	150	150	150	150
Gearbox ratio	:1	3.9	6.6	16	21	44	3.9	6.6	16	21	44
Nominal speed	rpm	718	424	175	133	64	872	515	213	162	77
Nominal torque (S1)	Nm	1.9	3.2	7.5	9.9	20.7	1.6	2.6	6.2	8.1	17.1

Motor only data			Motor accessories			
Motor	SD13 50Hz	SD13 60Hz				
Phase	1	1	Brake			
Poles	2	2	→ 2.0 Nm			
Frequency	Hz	50	60	Encoder		
Nominal voltage	V	230/115	230/115	N/A		
Nominal power	W	150	150	Controller		
Nominal speed	rpm	2600	3400	N/A		
Continuous torque (S1)	Nm	0.51	0.42			
Weight	Kg	5.4	5.4			
Stack length	mm	46	46			
Motor length	mm	148	148			
Capacitor	MFD	8.4 / 28.0	8.4 / 30.0			

Gearbox only data						Gearbox accessories	
Part number	891049	-	891050	891051	-		
Ratio	:1	3.9	6.6	16	21	44	Shaft modifications
Stages		1	1	2	2	2	
Max. continuous torque (S1) ¹	Nm	10.0	10.0	30.0	30.0	30.0	
Max. intermittent torque	Nm	12.5	12.5	37.5	37.5	37.5	
Efficiency	%	95	95	92	92	92	
Max. axial load (dynamic)	N	825	825	825	825	825	
Max. radial load, 12mm from flange	N	1000	1000	1000	1000	1000	
Weight	Kg	1.11	1.11	1.45	1.45	1.45	
Gearbox length	mm	58.0	58.0	79.9	79.9	79.9	
Gear material		Steel	Steel	Steel	Steel	Steel	

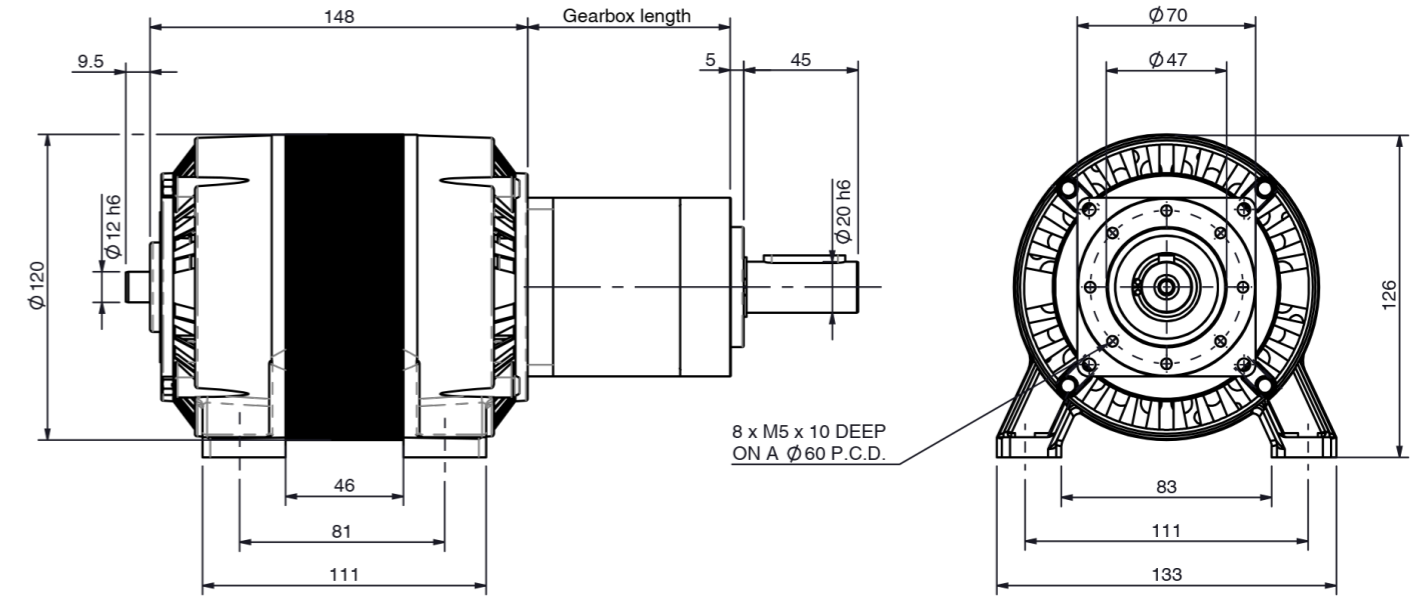
¹ S1 duty cycle based on 3000rpm input speed

SD13 (1 Phase, 4 Pole)-PGx70

230/115 V // 100 W // 32 - 436 rpm // 2.1 - 27.6 Nm

AC planetary geared motor

all dimensions in mm



Combination data											
Motor		SD13 50Hz	SD13 50Hz	SD13 50Hz	SD13 50Hz	SD13 50Hz	SD13 60Hz	SD13 60Hz	SD13 60Hz	SD13 60Hz	SD13 60Hz
Phase		1	1	1	1	1	1	1	1	1	1
Poles		4	4	4	4	4	4	4	4	4	4
Frequency	Hz	50	50	50	50	50	60	60	60	60	60
Voltage	V	230/115	230/115	230/115	230/115	230/115	230/115	230/115	230/115	230/115	230/115
Nominal motor power	W	100	100	100	100	100	100	100	100	100	100
Gearbox ratio	:1	3.9	6.6	16	21	44	3.9	6.6	16	21	44
Nominal speed	rpm	359	212	88	67	32	436	258	106	81	39
Nominal torque (S1)	Nm	2.5	4.3	10.0	13.2	27.6	2.1	3.5	8.3	10.9	22.7

Motor only data			Motor accessories			
Motor	SD13 50Hz	SD13 60Hz				
Phase	1	1	Brake			
Poles	4	4	→ 2.0 Nm			
Frequency	Hz	50	60	Encoder		
Nominal voltage	V	230/115	230/115	N/A		
Nominal power	W	100	100	Controller		
Nominal speed	rpm	1400	1700	N/A		
Continuous torque (S1)	Nm	0.68	0.56			
Weight	Kg	5.4	5.4			
Stack length	mm	46	46			
Motor length	mm	148	148			
Capacitor	MFD	6.0 / 28.0	6.0 / 24.0			

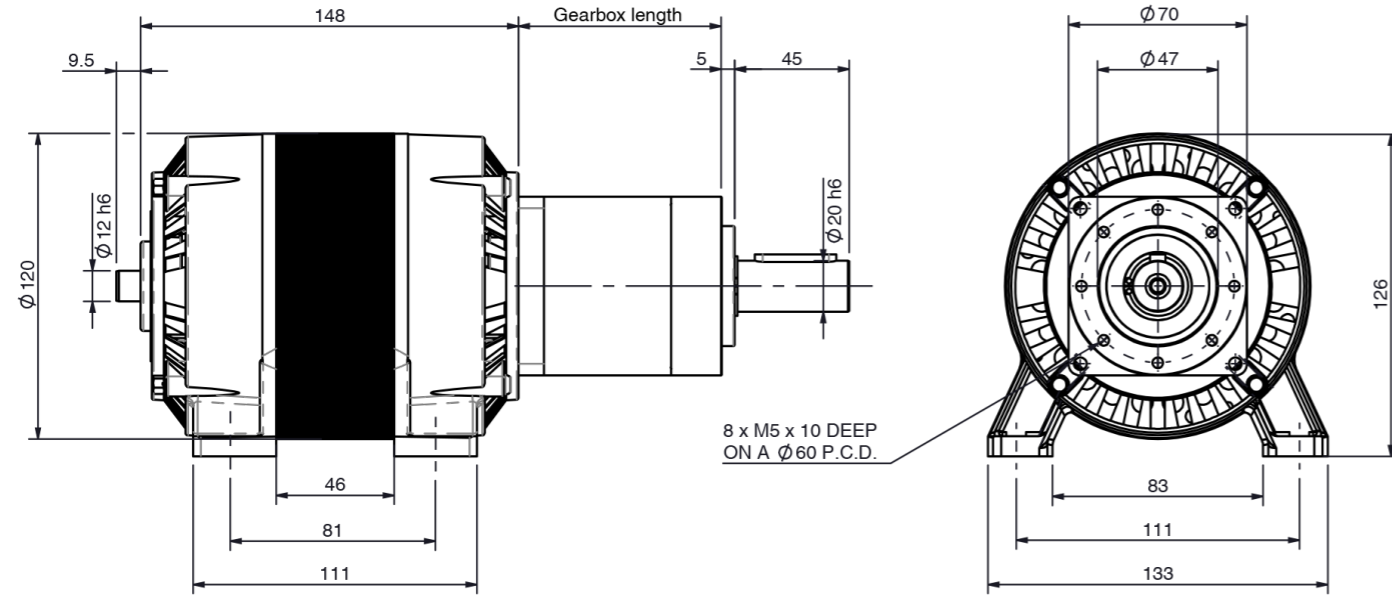
Gearbox only data						Gearbox accessories	
Part number	891049	-	891050	891051	-		
Ratio	:1	3.9	6.6	16	21	44	Shaft modifications
Stages		1	1	2	2	2	
Max. continuous torque (S1) ¹	Nm	10.0	10.0	30.0	30.0	30.0	
Max. intermittent torque	Nm	12.5	12.5	37.5	37.5	37.5	
Efficiency	%	95	95	92	92	92	
Max. axial load (dynamic)	N	825	825	825	825	825	
Max. radial load, 12mm from flange	N	1000	1000	1000	1000	1000	
Weight	Kg	1.11	1.11	1.45	1.45	1.45	
Gearbox length	mm	58.0	58.0	79.9	79.9	79.9	
Gear material		Steel	Steel	Steel	Steel	Steel	

¹ S1 duty cycle based on 3000rpm input speed

SD13 (3 Phase, 2 Pole)-PGx70 AC planetary geared motor

400/230 V // 190 W // 64 - 872 rpm // 2.0 - 26.2 Nm

all dimensions in mm



Combination data										
Motor		SD13 50Hz	SD13 50Hz	SD13 50Hz	SD13 50Hz	SD13 50Hz	SD13 60Hz	SD13 60Hz	SD13 60Hz	SD13 60Hz
Phase		3	3	3	3	3	3	3	3	3
Poles		2	2	2	2	2	2	2	2	2
Frequency	Hz	50	50	50	50	50	60	60	60	60
Voltage	V	400/230	400/230	400/230	400/230	400/230	400/230	400/230	400/230	400/230
Nominal motor power	W	190	190	190	190	190	190	190	190	190
Gearbox ratio	:1	3.9	6.6	16	21	44	3.9	6.6	16	21
Nominal speed	rpm	718	424	175	133	64	872	515	213	162
Nominal torque (S1)	Nm	2.4	4.1	9.8	12.5	26.2	2.0	3.3	8.1	10.3

Motor only data			Motor accessories		
Motor	SD13 50Hz	SD13 60Hz			
Phase	3	3	Brake		
Poles	4	4	→ 2.0 Nm		
Frequency	Hz	50	Encoder		
Nominal voltage	V	400/230	N/A		
Nominal power	W	190	Controller		
Nominal speed	rpm	2800	N/A		
Continuous torque (S1)	Nm	0.65			
Weight	Kg	5.4			
Stack length	mm	46			
Motor length	mm	148			

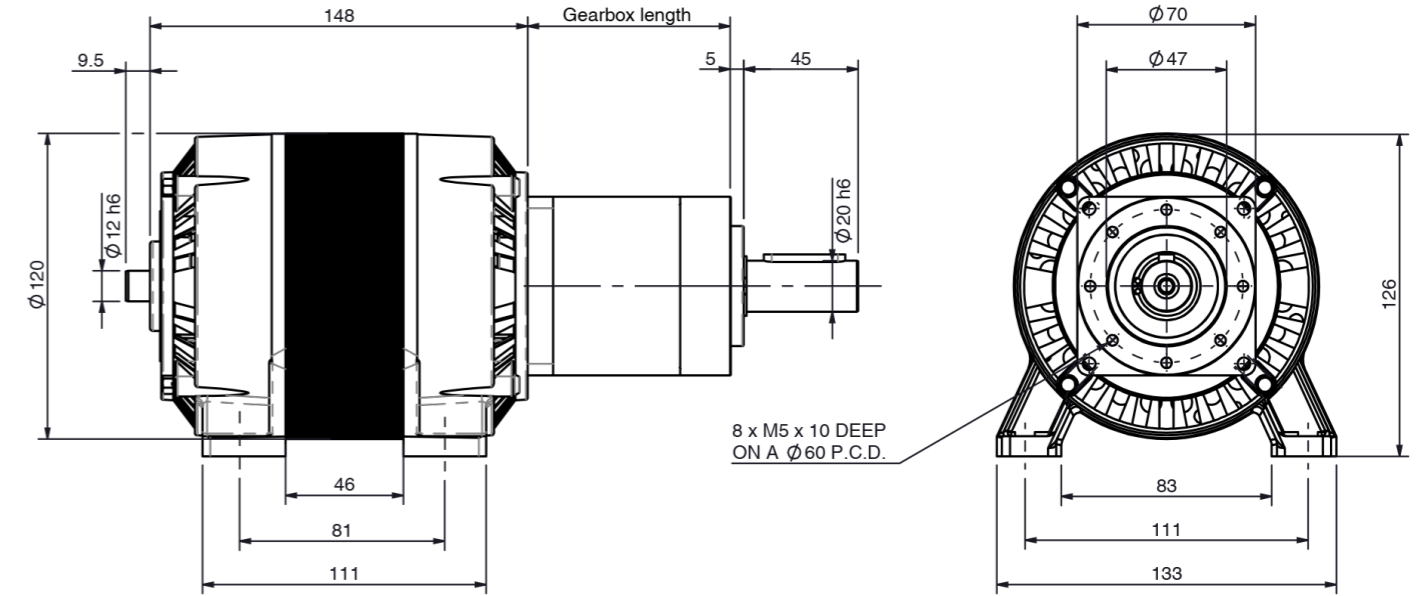
Gearbox only data						Gearbox accessories	
Part number	891049	-	891050	891051	-		
Ratio	:1	3.9	6.6	16	21	44	Shaft modifications
Stages		1	1	2	2	2	
Max. continuous torque (S1) ¹	Nm	10.0	10.0	30.0	30.0	30.0	
Max. intermittent torque	Nm	12.5	12.5	37.5	37.5	37.5	
Efficiency	%	95	95	92	92	92	
Max. axial load (dynamic)	N	825	825	825	825	825	→ Various lengths and diameters
Max. radial load, 12mm from flange	N	1000	1000	1000	1000	1000	→ Keyways
Weight	Kg	1.11	1.11	1.45	1.45	1.45	→ Flats
Gearbox length	mm	58.0	58.0	79.9	79.9	79.9	→ Centre holes
Gear material		Steel	Steel	Steel	Steel	Steel	

¹ S1 duty cycle based on 3000rpm input speed

SD13 (3 Phase, 4 Pole)-PGx70 AC planetary geared motor

400/230 V // 125 W // 32 - 436 rpm // 3.2 - 30.0 Nm

all dimensions in mm



Combination data										
Motor		SD13 50Hz	SD13 50Hz	SD13 50Hz	SD13 50Hz	SD13 50Hz	SD13 60Hz	SD13 60Hz	SD13 60Hz	SD13 60Hz
Phase		3	3	3	3	3	3	3	3	3
Poles		4	4	4	4	4	4	4	4	4
Frequency	Hz	50	50	50	50	50	60	60	60	60
Voltage	V	400/230	400/230	400/230	400/230	400/230	400/230	400/230	400/230	400/230
Nominal motor power	W	125	125	125	125	125	125	125	125	125
Gearbox ratio	:1	3.9	6.6	16	21	44	3.9	6.6	16	21
Nominal speed	rpm	359	212	88	67	32	436	258	106	81
Nominal torque (S1)	Nm	3.2	5.3	10.0	16.5	30.0	2.6	4.4	10.0	13.6

Motor only data			Motor accessories		
Motor	SD13 50Hz	SD13 60Hz			
Phase	3	3	Brake		
Poles	4	4	→ 2.0 Nm		
Frequency	Hz	50	Encoder		
Nominal voltage	V	400/230	N/A		
Nominal power	W	125	Controller		
Nominal speed	rpm	1400	N/A		
Continuous torque (S1)	Nm	0.85			
Weight	Kg	5.4			
Stack length	mm	46			
Motor length	mm	148			

Gearbox only data						Gearbox accessories	
Part number	891049	-	891050	891051	-		
Ratio	:1	3.9	6.6	16	21	44	Shaft modifications
Stages		1	1	2	2	2	
Max. continuous torque (S1) ¹	Nm	10.0	10.0	30.0	30.0	30.0	
Max. intermittent torque	Nm	12.5	12.5	37.5	37.5	37.5	
Efficiency	%	95	95	92	92	92	
Max. axial load (dynamic)	N	825	825	825	825	825	→ Various lengths and diameters
Max. radial load, 12mm from flange	N	1000	1000	1000	1000	1000	→ Keyways
Weight	Kg	1.11	1.11	1.45	1.45	1.45	→ Flats
Gearbox length	mm	58.0	58.0	79.9	79.9	79.9	→ Centre holes
Gear material		Steel	Steel	Steel	Steel	Steel	

¹ S1 duty cycle based on 3000rpm input speed

Accessories

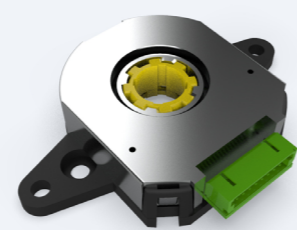
Here at Parvalux, we appreciate that sometimes it's the small things that can really make a difference, that's why we offer a range of accessories to enable more precise control of your motor-gearbox system.



Incremental encoder

Technical details

Part number	735912
Pulses per revolution	48 - 2048 PPR
Power supply	3.6 - 5.5 VDD
Current consumption	6.0 mA
Output high level	0.8 V
Output low level	0.4 V



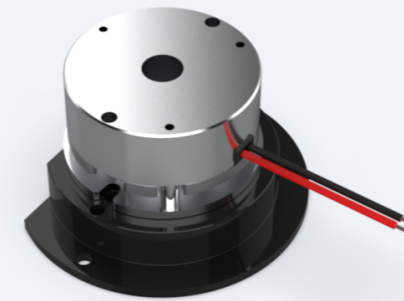
Differential encoder

Technical details

Part number	919388
Pulses per revolution	48 - 2048 PPR
Power supply	4.5 - 5.5 VDD
Current consumption	16.0 mA
Output high level	0.1 V
Output low level	0.1 V



Additional flanges may be required when mounting the various accessories to our motors.

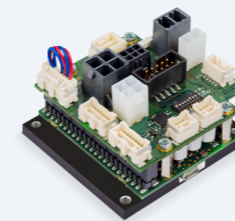


Brakes

- Power ON brakes
- Power OFF brakes (available on request)
- Multiple strengths
- Flange and magnetic mounting

Controllers

We offer a range of controllers that enable more intelligent and precise control of your application. Specification details available in our product range catalogue, found at parvalux.com.

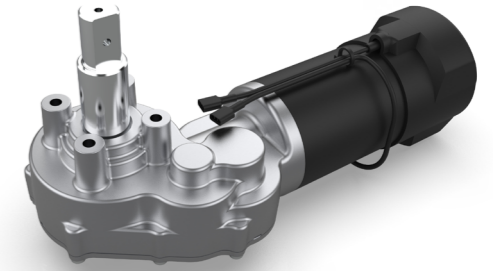


→ EPOS (positioning controllers)



→ ESCON (speed controllers)

More info...



Scan below to find out more

This brochure displays a number of examples of solutions for the packaging automation market, however, we also have an extensive range of motors and gearboxes that may be better suited to your application.

If you're looking for something a little different, please scan the QR code to the right to visit our website or contact your local sales engineer, found on page 41 of this brochure, to discuss the requirements of your packaging automation project.



Standard range

If you can't find anything within this brochure that meets your requirements, we have an extensive range of standard motors and gearboxes that can be found within our product range catalogue.

Visit parvalux.com/catalogues to explore the range.

Custom solutions

Our expert team of design engineers are well-versed in modifying our standard range to suit or can even create a completely custom solution from scratch.

Visit parvalux.com/custom-drive-solutions to take a look at some of our previous creations.



If you require any further information about the products found in this brochure, our standard range, or our custom drive solutions, our friendly team of sales engineers are on-hand to answer any questions you may have. Please turn to page 41 to find your local sales engineer and start the conversation about your project.


Contact

Made in the UK Available Worldwide


America

 **USA (East Coast)**
maxon precision motors, inc.
sales.us@maxongroup.com // +1/508-916 6620

 **USA (West Coast)**
maxon precision motors, inc.
info.us@maxongroup.com // +1/650-524 8822

 **Mexico**
maxon mexico
ventas.mx@maxongroup.com // +52 81 2188 1940


 **Brazil**
Treffer Ltda. (maxon sales agent)
motores@treffer.com.br // +55 31 3378 6222


 **Canada**
Electromate Inc. (maxon sales agent)
sales@electromate.com // +1/877 737 8698

Europe / Middle-East / Africa

 **Austria¹**
Kwapil & Co GmbH
verkauf@kwapil.com // +43/1 - 278 85 85

 **Czech Republic and Slovakia**
Kwapil & Co. Gesellschaft m.b.H
sales@kwapil.com // +420 541 211 538

 **Denmark**
DJ Stork Drives ApS
ulrik.eriksen@storkdrives.com // +45 8988 2416


 **Finland, Estonia, Latvia, and Lithuania**
DJ Stork Drives OY
jyrki.leinonen@storkdrives.fi // +358 45 11 06 433

 **France**
maxon France
contact.fr@maxongroup.com // +33/472 - 018 300

 **Germany**
maxon motor gmbh
sales.de@maxongroup.com // +49/89 - 42 04 93 - 0

 **Great Britain and Ireland**
maxon motor uk Ltd.
sales.uk@maxongroup.com // +44 (0) 1189 733337

 **Israel**
maxon motor Israel Ltd.
sales.il@maxongroup.com // +972 74 749 0888

 **Italy**
maxon motor italia S.r.l
sales.it@maxongroup.com // +39 02 93580588

¹ Kwapil & Co GmbH also offer sales support to Hungary, Slovenia, Romania, Croatia, Serbia, and Bulgaria

Europe / Middle-East / Africa

 **Netherlands, Belgium, and Luxembourg**
maxon motor benelux bv
sales.nl@maxongroup.com // +31 53 744 07 44

 **Norway**
DJ Stork Drives AS
arve.stensrud@storkdrives.com // +47/6199 3001

 **Poland**
maxon Polska sp. z o.o
sprzedaz@maxongroup.com // +48 618 800 830

 **Spain and Portugal**
maxon motor iberica
info.es@maxongroup.com // +34 916 564 973

 **Sweden and Iceland**
Stork Drives AB
info@storkdrives.se // +46/8 - 635 60 00

 **Switzerland**
maxon Switzerland ag
sales.ch@maxongroup.com // +41 (0) 41 662 95 95

 **South Africa**
DNH Technologies
info@dnhtrade.co.za // +27 11 468 2722


 **Turkey**
Ensatek Muhendislik Otomsyon Sanayi Ticaret Limited
ensatek@ensatek.tr // +90 216 510 88 64

Pacific

 **Australia and New Zealand**
maxon motor australia Pty Ltd
sales.au@maxongroup.com // +61 2 9457 7477

Asia

 **China**
maxon motor (Suzhou) Co., Ltd.
sales.cn@maxongroup.com // +86/512-8207 9287

 **India**
maxon precision motor India Pvt. Ltd.
sales.in@maxongroup.com // +91 80417 34132

 **Japan**
maxon Japan
sales.jp@maxongroup.com // +81/3 - 3350 42 61

 **South Korea**
maxon motor iberica
info.kr@maxongroup.com // +82 2 3486 3441

 **Singapore**
maxon motor SEA Pte. Ltd.
admin.sq@maxongroup.com // +65/6950 4628

 **Taiwan**
maxon motor Taiwan Co. Ltd.
sales.tw@maxongroup.com // +886-2-2999-3558

 **Hong Kong**
Servo Dynamics (K.K.) Ltd.
sales@servodynamics.com.hk // +852/2409 9986

 **Malaysia**
Servo Engineering Sdn. Bhd.
sales-rfq@servo.my // +603-7782 3540

 **Thailand**
Servo Dynamics (Thailand) Co. LTD
dmk@servoline.com // +66 2 753 56 25

maxon

Parvalux is proudly a maxon company, meaning that we have representation on every continent and the backing of one of the finest technical teams on the planet.

parvalux
by **maxon**

