

Door automation solutions



Parvalux

About Us

A true British manufacturing success story, Parvalux is the UK's largest fractional horsepower electric motor manufacturer and supplier with state-of-the-art manufacturing and service facilities.

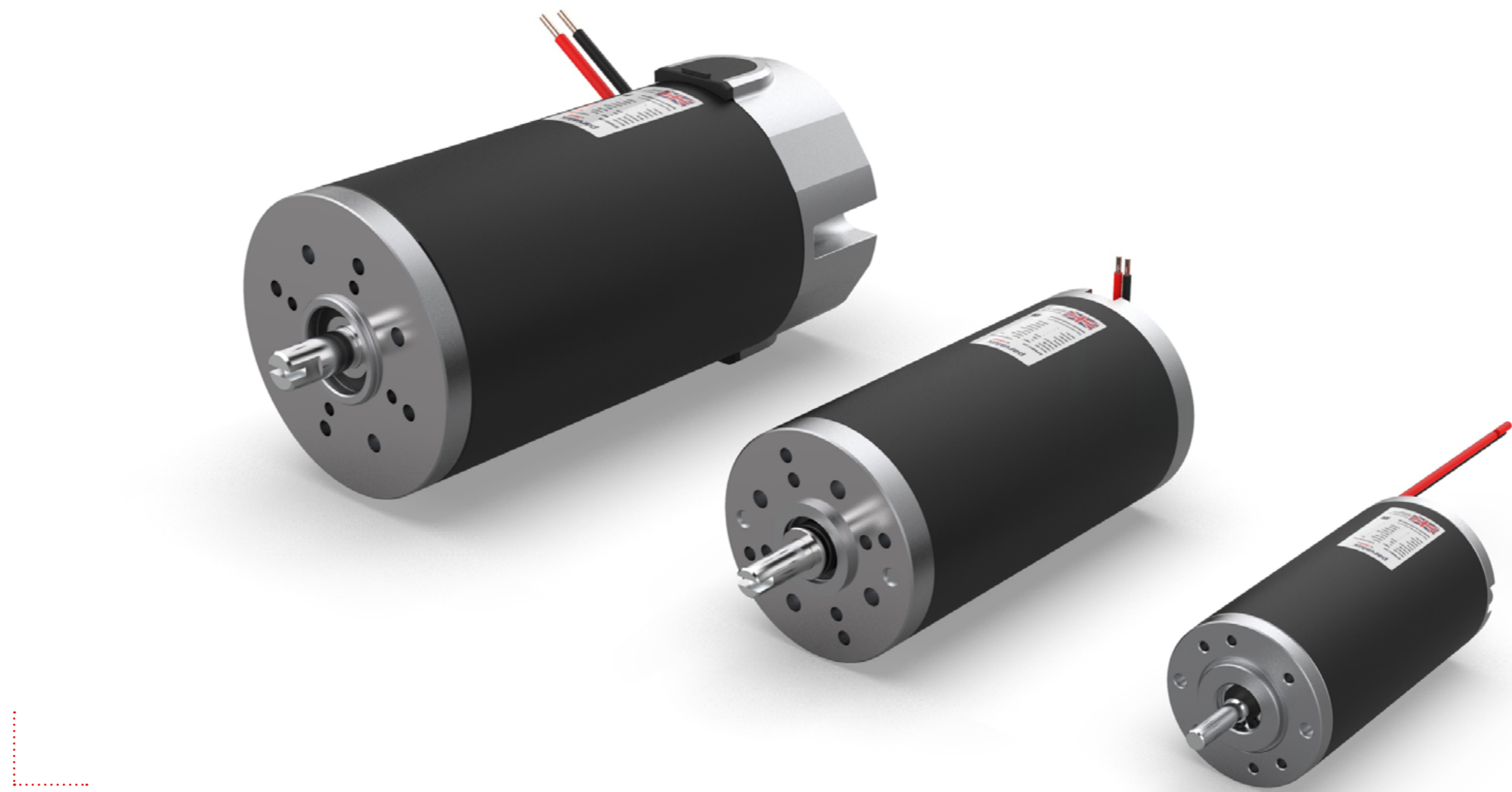
We have over 70 years' experience creating the perfect combination of motor and gearbox to match our customers' applications and we offer thousands of standard AC, DC brushed and DC brushless electric motor options.

We can easily customise any motor or gearbox to meet your exact requirements, with our expert in-house design team on hand to help you choose, customise or design from scratch a geared motor solution that ensures you gain a competitive advantage in your market.

Our products are found in hundreds of applications globally, but we are particularly strong in industrial automation, e-mobility, transportation, logistics and a wide range of medical devices.

Parvalux is proudly a maxon company, meaning that we have representation on every continent and the backing of one of the finest technical teams on the planet. Require assistance with your project? Don't hesitate to contact your local sales engineer, found online or at the back of this brochure.

To find out more about the Parvalux product range, please visit www.parvalux.com.



maxon

Precision Drive Systems

In 2018 Parvalux was acquired by Swiss motor manufacturer, maxon. Their brushless and brushed DC motors with ironless windings are among the best in the world; with flat motors with iron cores completing their modular product portfolio.

maxon's modular system includes planetary and spur gearheads, spindle drives, as well as encoders and control electronics.

Door automation

Parvalux provides an exciting range of motors for manufacturers of automatic door systems. Delivering quality, reliability, and efficiency, our door drive solutions are perfectly suited for an extensive range of opening mechanisms and are tried and tested in a myriad of environmental conditions. Take a look below at some of the different types of door systems we currently operate in.



Building access

Whether it's sliding, spinning or a standard hinge opening that you require, our intelligent geared motor solutions are trusted to provide the reliable, intelligent power needed to operate doors of all shapes and sizes.



Rail access

Parvalux products are found in various applications throughout the rail industry. Ranging from the automated doors on the train itself, to ticket barriers on platforms, our motors ensure your trip from A to B runs as smoothly as possible.



Elevator access

We appreciate that safety is a key factor in the automation of elevator doors and that's why we test every single product that we manufacture. Our reliability is unmatched and is one of the main reasons that we get it right on so many levels on elevator door systems.



Home access

Our ability to provide reliable operation in a range of environmental conditions means Parvalux geared motors are perfectly suited for automatic gates and garage doors, ensuring you feel safe and secure, wherever you may live.

Parvalux Solutions

Parvalux provides an exciting range of motors for manufacturers of automatic door and gate opening systems.

Our motors prove themselves daily in hundreds of premises, worldwide, and offer the reliability, dependability, and low running costs our customers have come to expect from a Parvalux British-designed and engineered unit.

Additional content	Page
Economic PMDC range	17 - 18
Direct drive solutions	19 - 20
Inline solutions	21 - 24
Accessories	25 - 26



Whether your requirement is for automatic sliding doors, gate opening systems or electric garage doors, we can quickly customise our range to suit your specification or even develop a motor that's specific to your application.

Find the contact details of your local sales engineer on page 27 of this brochure.

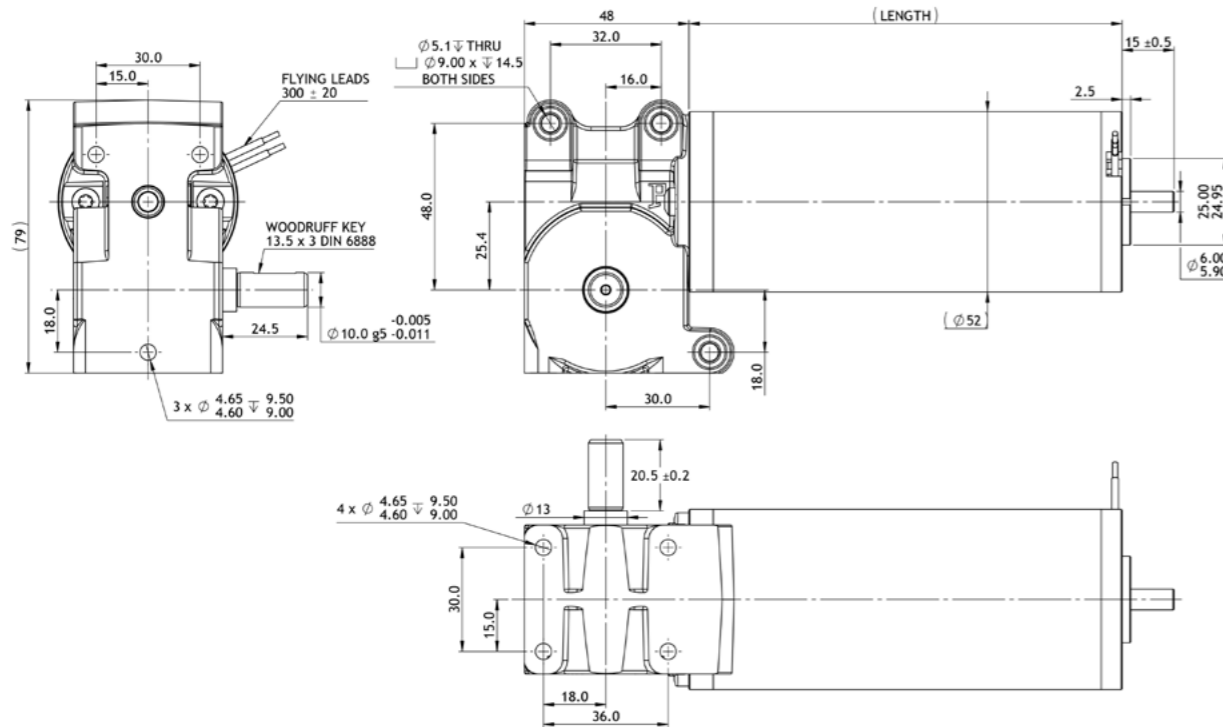
BRx52-GB58

PMDC right-angle geared motor

24 - 48 V // 28 - 69 W // Peak torque: 4.0 Nm

Light-duty door automation systems

all dimensions in mm



Technical data

Motor		BRx52-30	BRx52-58
Voltage	V	24 - 48	24 - 48
Maximum power	W	28	69
Nominal speed	rpm	319	319
Nominal torque ¹	Nm	1.0	2.5
Peak gearbox torque	Nm	8.0	8.0
Gearbox axial load	N	300	300
Gearbox radial load	N	400	400
Gearbox efficiency	%	80	80
Gearbox ratio	:1	10	10
Length	mm	95	125

¹ Nominal torque based on a 50% duty cycle

Accessories

Encoder	+L mm
Low resolution (4 - 48 ppr)	12.0
High resolution incremental (4 - 4096 ppr)	9.0
High resolution absolute (4 - 4096 ppr)	12.0

Brake	+L mm
Power on	38.0
Power off	32.0

Output shaft

Modified shafts, additional pulleys, cogs, etc.

+L mm = added length



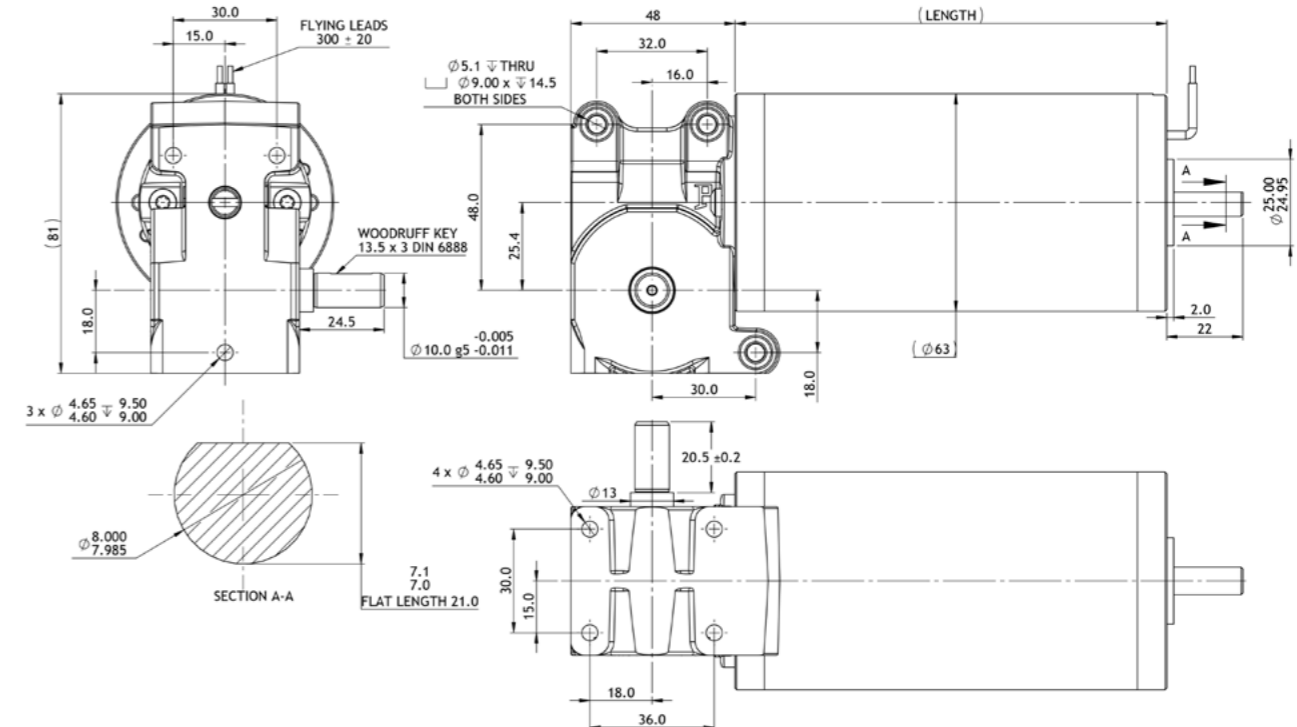
BRx63-GB58

PMDC right-angle geared motor

12 - 48 V // 57 - 85 W // Peak torque: 5.5 Nm

Light-duty door automation systems

all dimensions in mm



Technical data

Motor		BRx63-25	BRx63-55
Voltage	V	12 - 48	12 - 48
Maximum power	W	57	85
Nominal speed	rpm	319	319
Nominal torque ¹	Nm	2.2	3.3
Peak gearbox torque	Nm	8.0	8.0
Gearbox axial load	N	300	300
Gearbox radial load	N	350	350
Gearbox efficiency	%	82	82
Gearbox ratio	:1	10	10
Length	mm	95	125

¹ Nominal torque based on a 50% duty cycle

Accessories

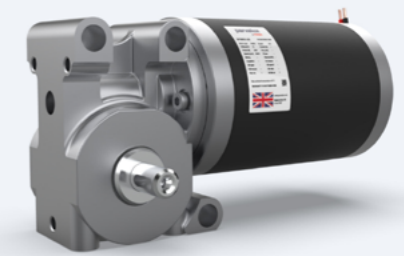
Encoder	+L mm
Low resolution (4 - 48 ppr)	12.0
High resolution incremental (4 - 4096 ppr)	9.0
High resolution absolute (4 - 4096 ppr)	12.0

Brake	+L mm
Power on	38.0
Power off	32.0

Output shaft

Modified shafts, additional pulleys, cogs, etc.

+L mm = added length



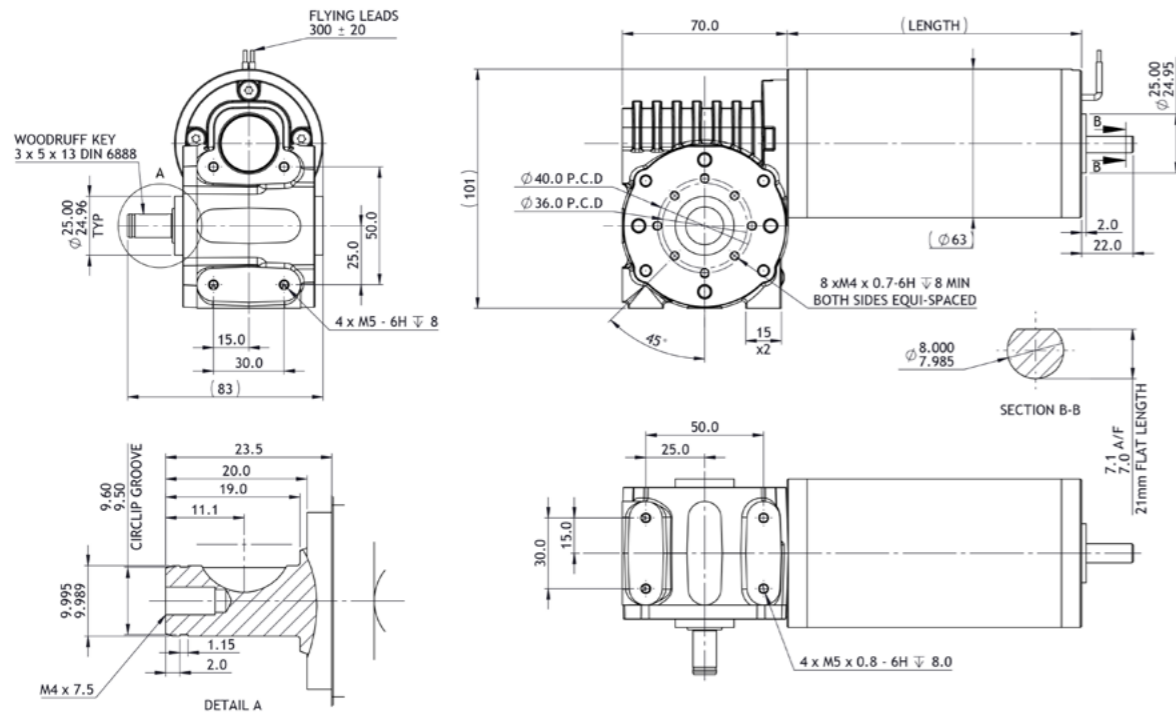
BRx63-GB80

PMDC right-angle geared motor

12 - 48 V // 57 - 85 W // Peak torque: 5.5 Nm

Standard-duty door automation systems

all dimensions in mm



Technical data

Motor		BRx63-25	BRx63-55
Voltage	V	12 - 48	12 - 48
Maximum power	W	57	85
Nominal speed	rpm	319	319
Nominal torque ¹	Nm	2.2	3.3
Peak gearbox torque	Nm	13.0	13.0
Gearbox axial load	N	300	300
Gearbox radial load	N	350	350
Gearbox efficiency	%	82	82
Gearbox ratio	:1	10	10
Length	mm	95	125

¹ Nominal torque based on a 50% duty cycle

Accessories

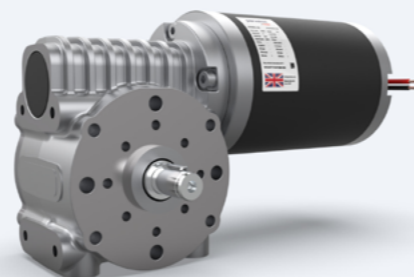
Encoder	+L mm
Low resolution (4 - 48 ppr)	12.0
High resolution incremental (4 - 4096 ppr)	9.0
High resolution absolute (4 - 4096 ppr)	12.0

Brake	+L mm
Power on	38.0
Power off	32.0

Output shaft

Modified shafts, additional pulleys, cogs, etc.

+L mm = added length



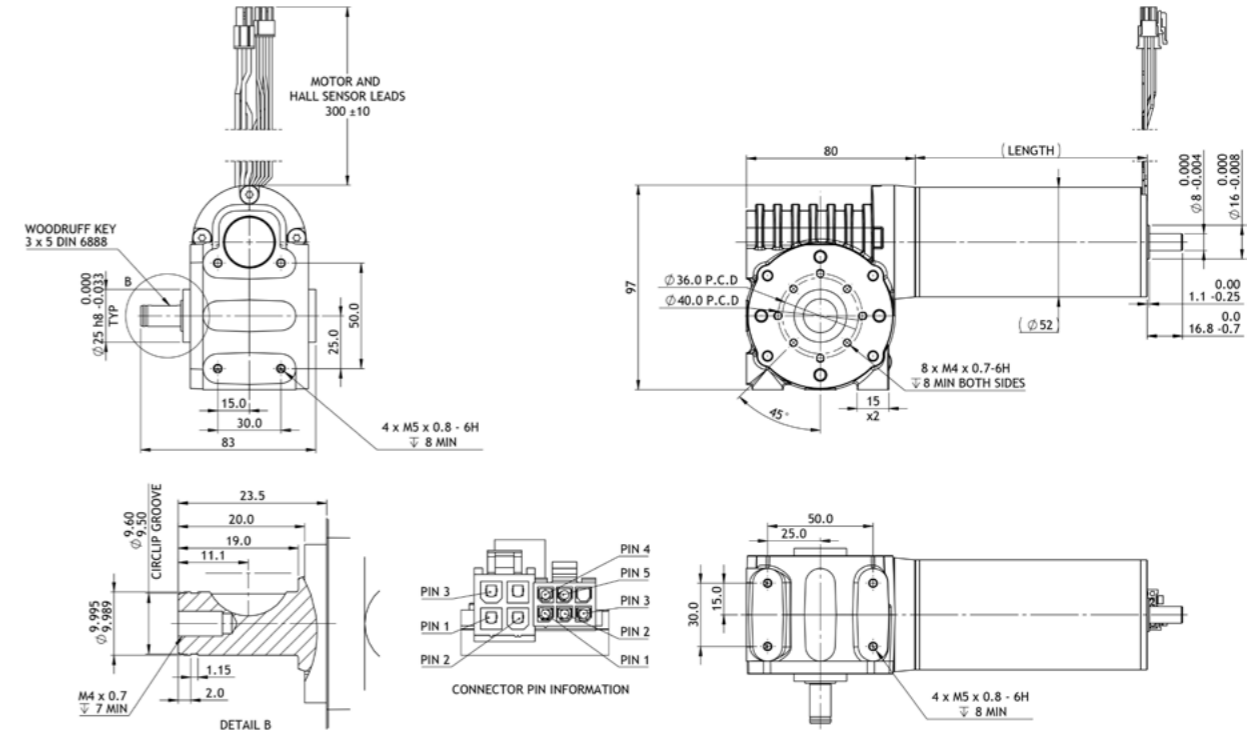
ECi52-GB80

BLDC right-angle geared motor

18 - 48 V // 180 - 200 W // Peak torque: 13.0 Nm

Standard-duty door automation systems

all dimensions in mm



Technical data

Motor		ECi52 180 W	ECi52 200 W
Voltage	V	18 - 48	18 - 48
Maximum power	W	180	200
Nominal speed	rpm	288	232
Nominal torque ¹	Nm	5.2	8.0
Peak gearbox torque	Nm	13.0	13.0
Gearbox axial load	N	300	300
Gearbox radial load	N	350	350
Gearbox efficiency	%	80	80
Gearbox ratio	:1	15	15
Length	mm	80	110

¹ Nominal torque based on a 50% duty cycle

Accessories

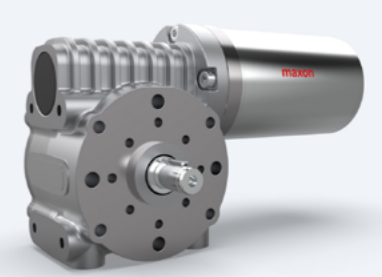
Encoder	+L mm
Low resolution (4 - 48 ppr)	12.0
High resolution incremental (4 - 4096 ppr)	9.0
High resolution absolute (4 - 4096 ppr)	12.0

Brake	+L mm
Power on	38.0
Power off	32.0

Output shaft

Modified shafts, additional pulleys, cogs, etc.

+L mm = added length



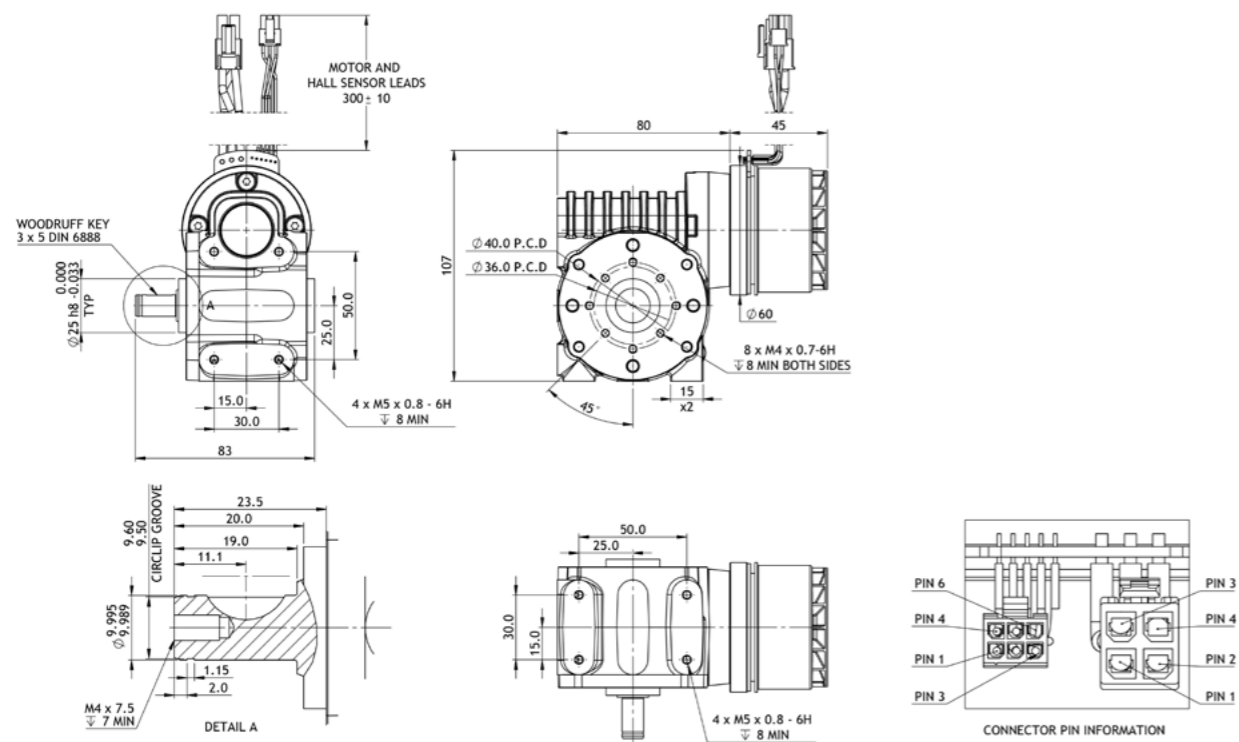
EC60-GB80

BLDC right-angle geared motor

12 - 48 V // 200 W // Peak torque: 13.0 Nm

Standard-duty door automation systems

all dimensions in mm



Technical data

Motor		EC60 200 W
Voltage	V	12 - 48
Maximum power	W	200
Nominal speed	rpm	314
Nominal torque ¹	Nm	6.0
Peak gearbox torque	Nm	13.0
Gearbox axial load	N	300
Gearbox radial load	N	400
Gearbox efficiency	%	80
Gearbox ratio	:1	10
Length	mm	45.5

¹ Nominal torque based on a 50% duty cycle

Accessories

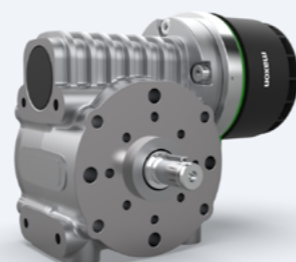
Encoder	+L mm
Low resolution (4 - 48 ppr)	12.0
High resolution incremental (4 - 4096 ppr)	9.0
High resolution absolute (4 - 4096 ppr)	12.0

Brake	+L mm
Power on	38.0
Power off	32.0

Output shaft

Modified shafts, additional pulleys, cogs, etc.

+L mm = added length



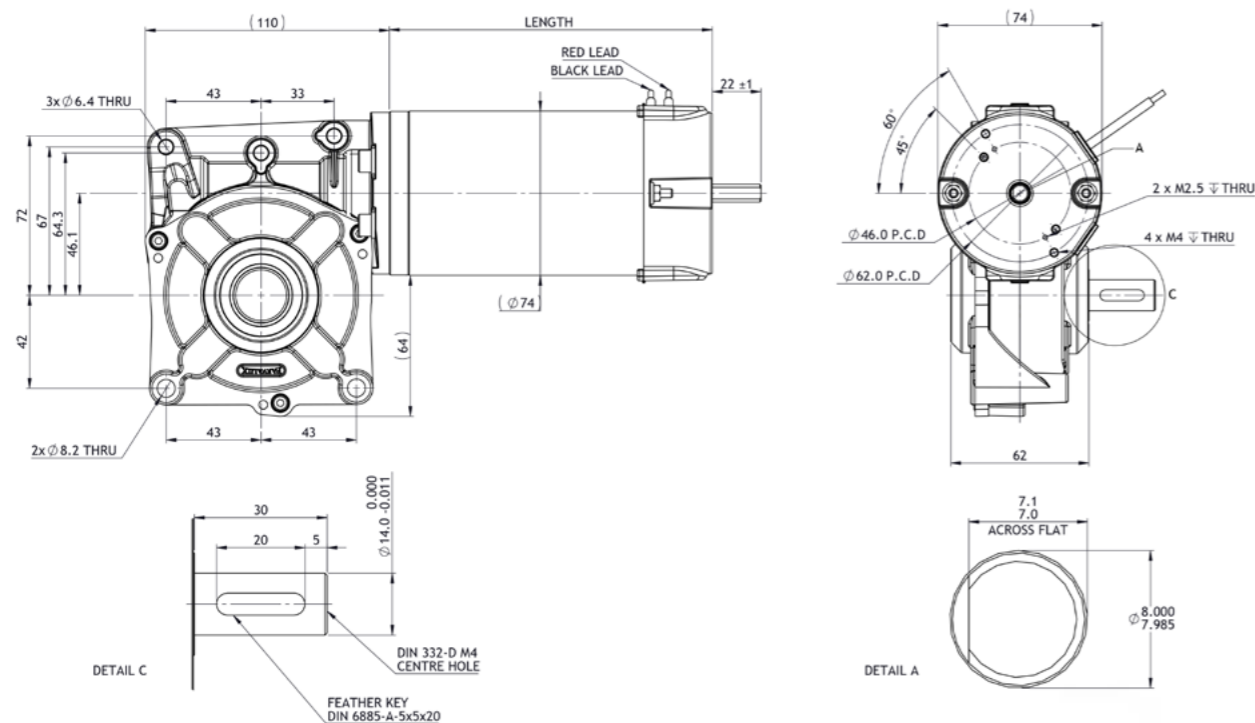
PM70-GB12

PMDC right-angle geared motor

12 - 48 V // 79 - 157 W // Peak torque: 14.0 Nm

Heavy-duty door automation systems

all dimensions in mm



Technical data

Motor		PM70-125	PM70-146
Voltage	V	12 - 48	12 - 48
Maximum power	W	79	157
Nominal speed	rpm	300	300
Nominal torque ¹	Nm	4.0	8.0
Peak gearbox torque	Nm	32.0	32.0
Gearbox axial load	N	300	300
Gearbox radial load	N	500	500
Gearbox efficiency	%	85	85
Gearbox ratio	:1	12.5	12.5
Length	mm	125	146

¹ Nominal torque based on a 50% duty cycle

Accessories

Encoder	+L mm
Low resolution (4 - 48 ppr)	12.0
High resolution incremental (4 - 4096 ppr)	9.0
High resolution absolute (4 - 4096 ppr)	12.0

Brake	+L mm
Power on	38.0
Power off	32.0

Output shaft

Modified shafts, additional pulleys, cogs, etc.

+L mm = added length



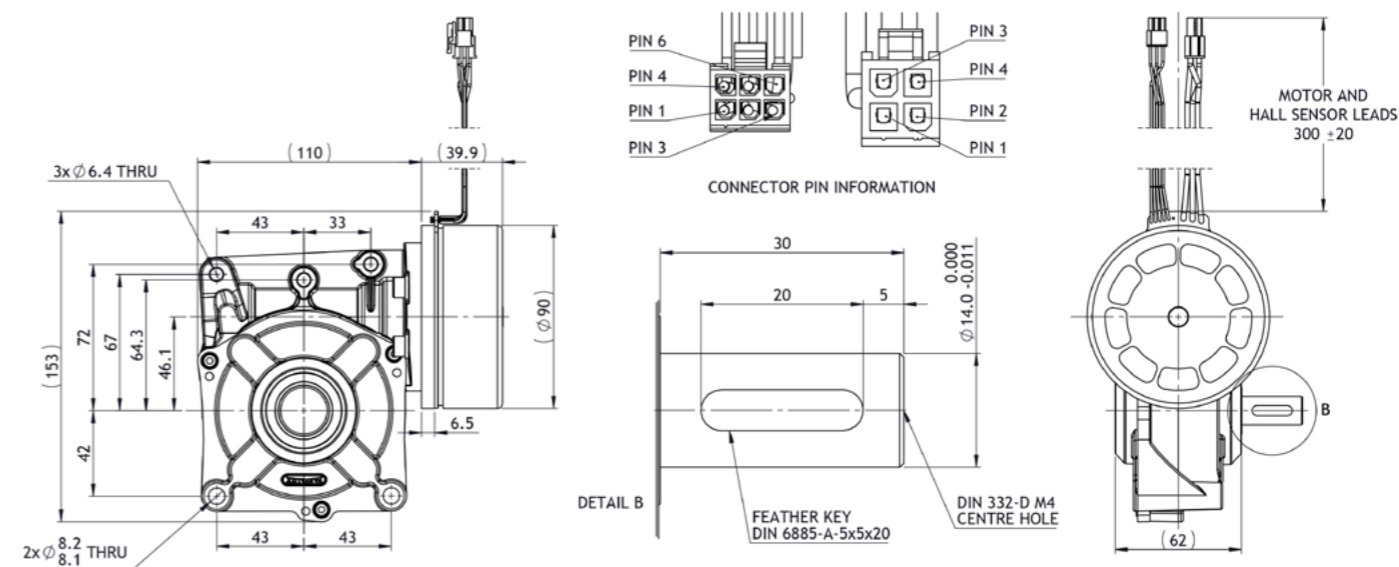
EC90-GB12

BLDC right-angle geared motor

12 - 60 V // 360 - 400 W // Peak torque: 32.0 Nm

Heavy-duty door automation systems

all dimensions in mm



Technical data

Motor		EC90 360 W	EC90 400 W
Voltage	V	12 - 60	12 - 60
Maximum power	W	360	400
Nominal speed	rpm	288	288
Nominal torque ¹	Nm	8.0	10.0
Peak gearbox torque	Nm	32.0	32.0
Gearbox axial load	N	300	300
Gearbox radial load	N	500	500
Gearbox efficiency	%	85	85
Gearbox ratio	:1	12.5	12.5
Length	mm	40	40

¹ Nominal torque based on a 50% duty cycle

Accessories

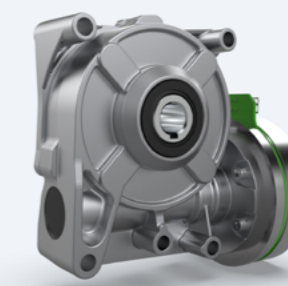
Encoder	+L mm
Low resolution (4 - 48 ppr)	12.0
High resolution incremental (4 - 4096 ppr)	9.0
High resolution absolute (4 - 4096 ppr)	12.0

Brake	+L mm
Power on	38.0
Power off	32.0

Output shaft

Modified shafts, additional pulleys, cogs, etc.

+L mm = added length



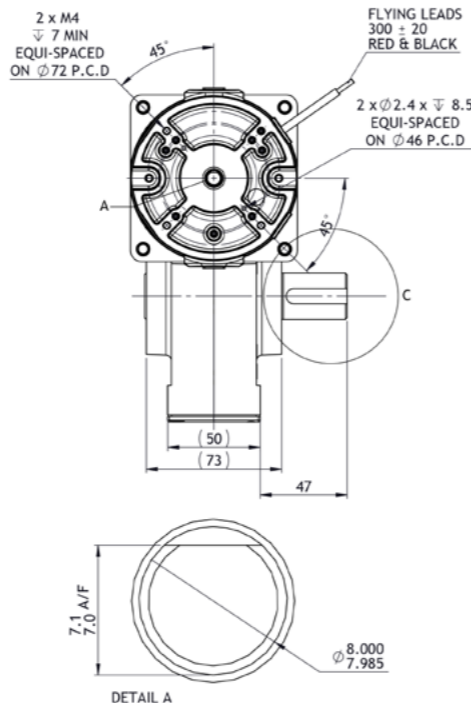
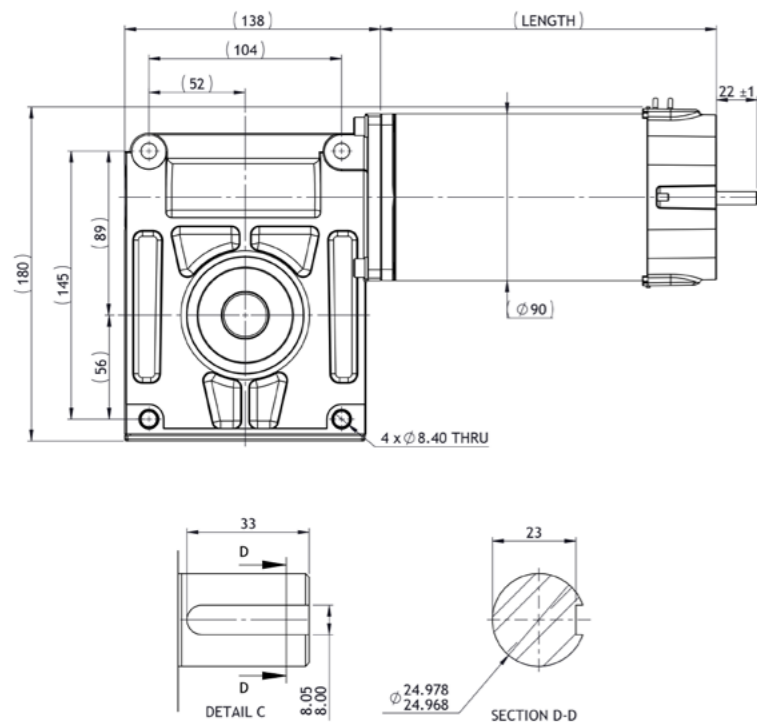
PM90-GB9

PMDC right-angle geared motor

12 - 48 V // 200 - 283 W // Peak torque: 25.0 Nm

Super heavy-duty door automation systems

all dimensions in mm



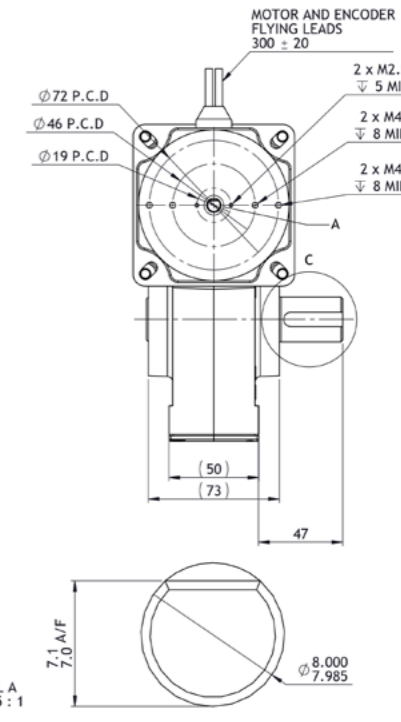
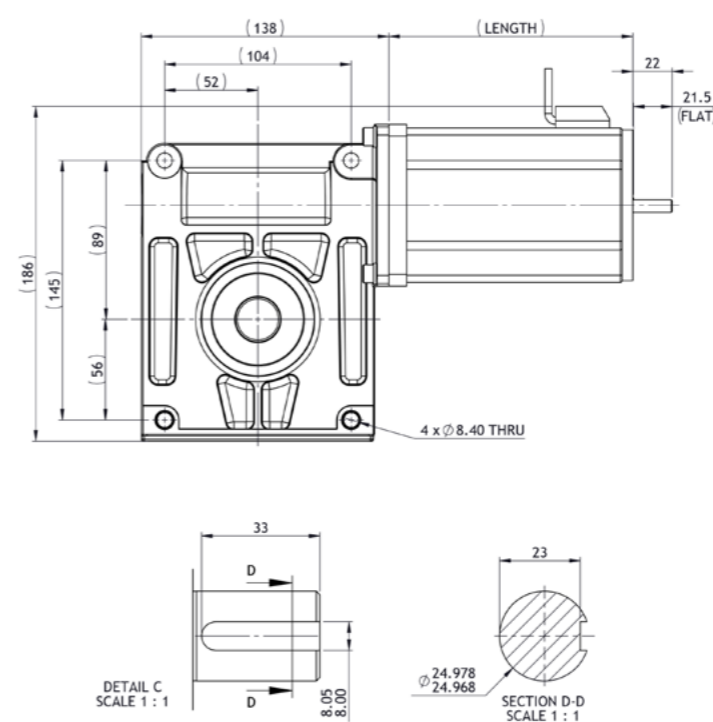
PBL86-GB9

BLDC right-angle geared motor

12 - 48 V // 419 - 586 W // Peak torque: 40.0 Nm

Super heavy-duty door automation systems

all dimensions in mm



Technical data

		PM90-150	PM90-180
Motor		PM90-150	PM90-180
Voltage	V	12 - 48	12 - 48
Maximum power	W	200	283
Nominal speed	rpm	275	275
Nominal torque ¹	Nm	10.0	15.0
Peak gearbox torque	Nm	80.0	80.0
Gearbox axial load	N	600	600
Gearbox radial load	N	800	800
Gearbox efficiency	%	90	90
Gearbox ratio	:1	12.75	12.75
Length	mm	153	183

¹ Nominal torque based on a 50% duty cycle

Accessories

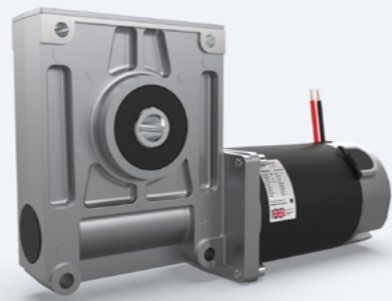
Encoder	+L mm
Low resolution (4 - 48 ppr)	12.0
High resolution incremental (4 - 4096 ppr)	9.0
High resolution absolute (4 - 4096 ppr)	12.0

Brake	+L mm
Power on	38.0
Power off	32.0

Output shaft

Modified shafts, additional pulleys, cogs, etc.

+L mm = added length



Technical data

		PBL86-55	PBL86-80
Motor		PBL86-55	PBL86-80
Voltage	V	12 - 48	12 - 48
Maximum power	W	419	586
Nominal speed	rpm	314	314
Nominal torque ¹	Nm	15.0	21.0
Peak gearbox torque	Nm	80.0	80.0
Gearbox axial load	N	600	600
Gearbox radial load	N	800	800
Gearbox efficiency	%	90	90
Gearbox ratio	:1	12.75	12.75
Length	mm	111	136

¹ Nominal torque based on a 50% duty cycle

Accessories

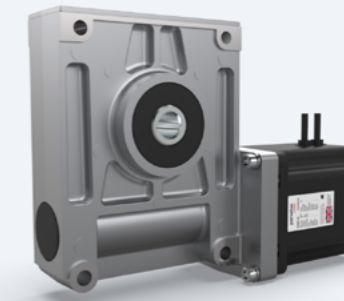
Encoder	+L mm
Low resolution (4 - 48 ppr)	12.0
High resolution incremental (4 - 4096 ppr)	9.0
High resolution absolute (4 - 4096 ppr)	12.0

Brake	+L mm
Power on	38.0
Power off	32.0

Output shaft

Modified shafts, additional pulleys, cogs, etc.

+L mm = added length



Economic PMDC Range

The EPM50-GB80 geared motor provides a low-cost solution for your door automation system.

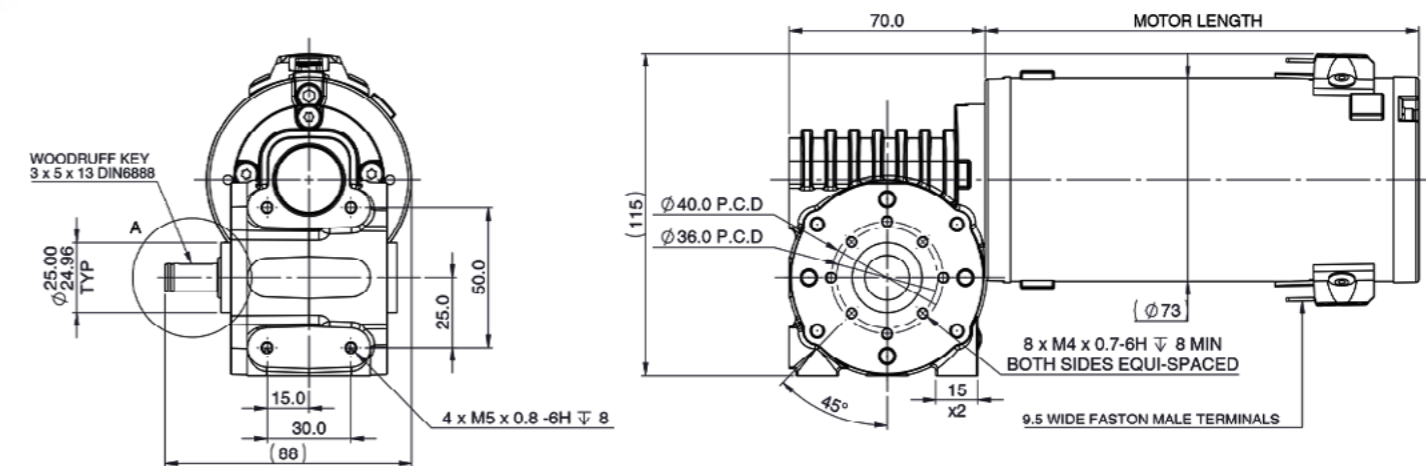
The EPM50 motor range enables an impressive output performance, as well as the option for accessories such as encoders and brakes to fit seamlessly into your motor-gearbox combination.



- 💡 Accessories available with the EPM50-GB80:
- ➔ Incremental encoders
 - ➔ Power ON brakes

Combination	Output speed ¹	Nominal torque ²	Motor length
EPM50-25-GB80	260 rpm	4.5 Nm	119 mm
EPM50-38-GB80	260 rpm	5.0 Nm	130 mm
EPM50-50-GB80	260 rpm	7.0 Nm	145 mm
EPM50-63-GB80	260 rpm	8.5 Nm	155 mm

¹ Other speeds available ² Nominal torque based on a 50% duty cycle



Engineering drawing available on request

Direct drive solutions

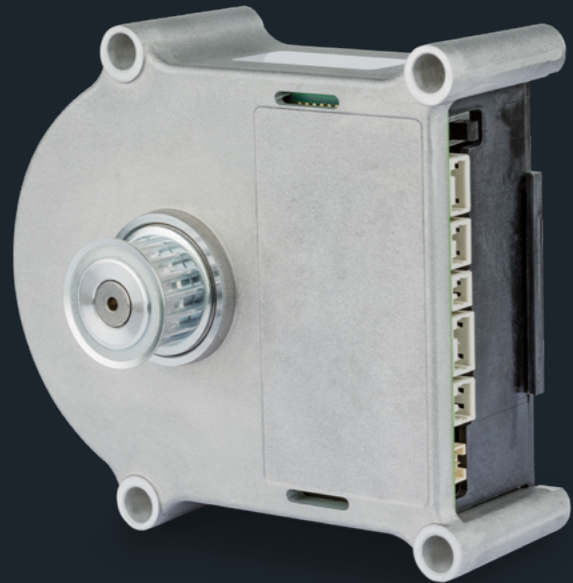
Complex mechatronic drive systems only work if all components are of the highest quality and perfectly synchronized.

maxon not only develops and produces DC and BLDC motors, gearheads, sensors, and controllers, but is also able to combine the high-quality drive components in a mechatronic system. The benefits: a compact design, components configured specifically for the customer, and the guarantee of obtaining maximum performance from the drive system.

Benefits

- Everything from a single source: DC/ BLDC motor, gearhead, sensor, electronics, software, housing
- No compromise on quality
- Long service life
- Low power consumption
- Excellent control properties
- Robust design: resistant to vibrations, shocks, and extreme temperatures
- Compact design; top volume-to-performance ratio

maxon Door Drive For more comfort and safety



Together with a Swiss elevator manufacturer, maxon developed a system solution for driving elevator doors. The system consists of a brushless DC motor with a diameter of 90 mm and a MILE encoder integrated directly on the print. It is combined with a customer-specific positioning controller based on the maxon EPOS2 series.

To meet the requirements of various types of elevators and the different international safety standards, the controller of the maxon Door Drive offers the following benefits:

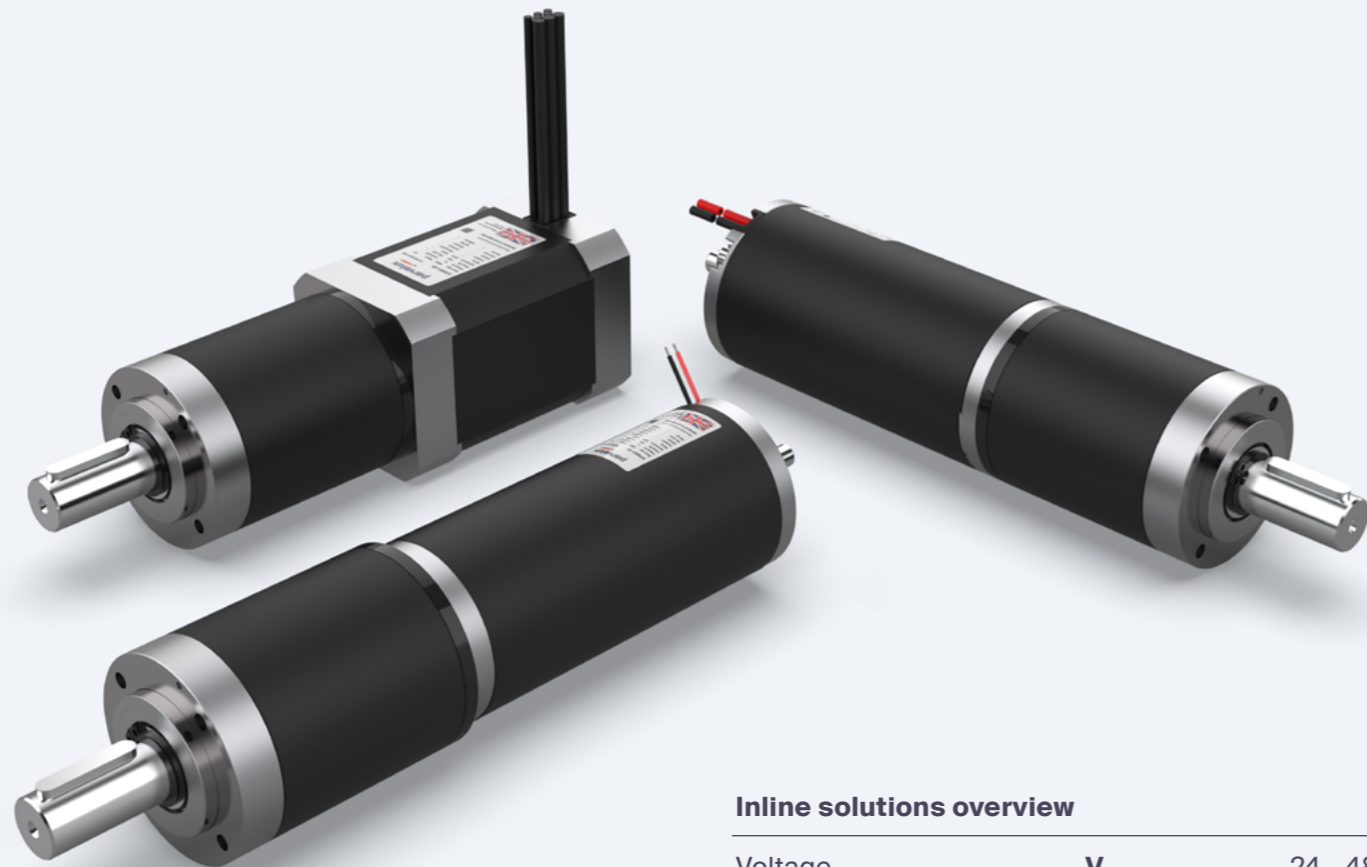
- Detects size and weight of the doors after a calibration procedure
- Autonomously calculates and corrects the optimal parameters
- Configured and ready to use in just a few steps
- Sufficient torque to move doors smoothly
- Collects data for technicians due to the intelligent controller



Inline solutions

As well as right-angle geared units, we also offer a selection of inline solutions.

This range of motor-gearbox units includes planetary gear options that provide a high output performance in a compact unit.



Inline solutions overview

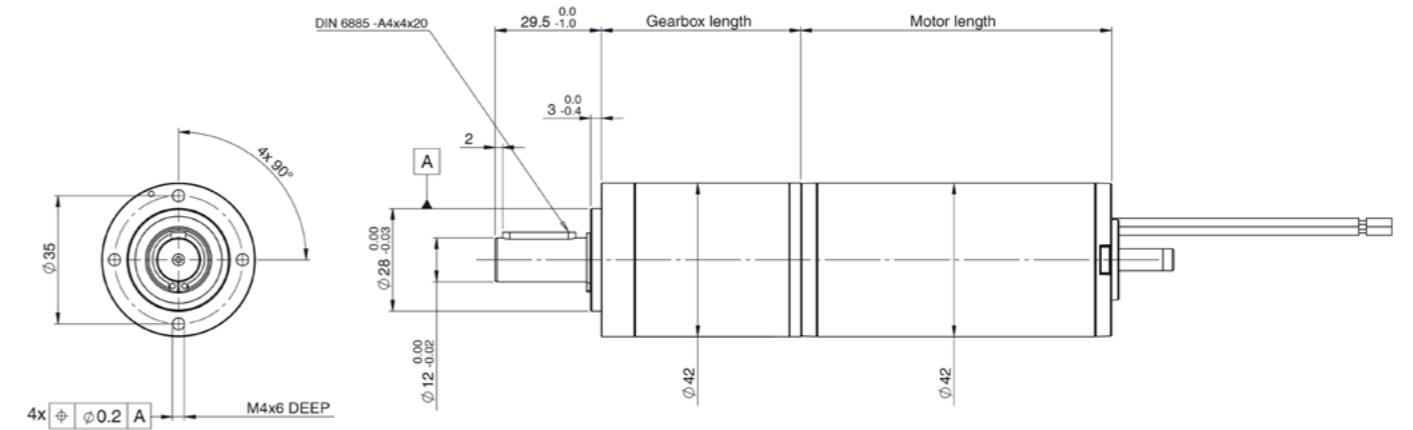
Voltage	V	24 - 48
Output speed	rpm	4 - 930
Power	W	16 - 50
Nominal torque	Nm	0.1 - 11.3
Peak torque	Nm	0.2 - 11.3
Max. axial load	N	150
Max. radial load	N	120 - 360

BRx42-PGx42 PMDC inline planetary geared motor

12 - 48 V // 16 - 24 W // Peak torque: 1.4 Nm

Inline door automation solution

all dimensions in mm



Technical data

		BRx42-25	BRx42-25	BRx42-40	BRx42-40
Motor					
Voltage	V	24 - 48	24 - 48	24 - 48	24 - 48
Maximum power	W	16	16	24	24
Nominal speed	rpm	333	267	333	267
Nominal torque ¹	Nm	0.6	0.6	0.9	0.9
Peak gearbox torque	Nm	16.9	16.9	16.9	16.9
Gearbox axial load	N	150	150	150	150
Gearbox radial load	N	240	240	240	240
Gearbox efficiency	%	81	81	81	81
Gearbox ratio ²	:1	12	15	12	15
Motor length	mm	70	70	85	85
Gearbox length	mm	54.8	54.8	54.8	54.8

¹ Nominal torque based on a 50% duty cycle ² Other ratios available on request

Accessories

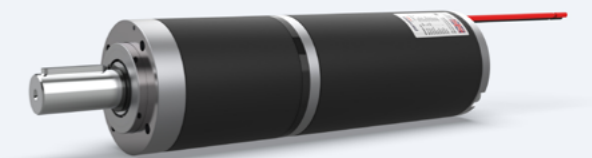
Encoder	+L mm
Low resolution (4 - 48 ppr)	12.0
High resolution incremental (4 - 4096 ppr)	9.0
High resolution absolute (4 - 4096 ppr)	12.0

Brake	+L mm
Power on	38.0
Power off	32.0

Output shaft

Modified shafts, additional pulleys, cogs, etc.

+L mm = added length



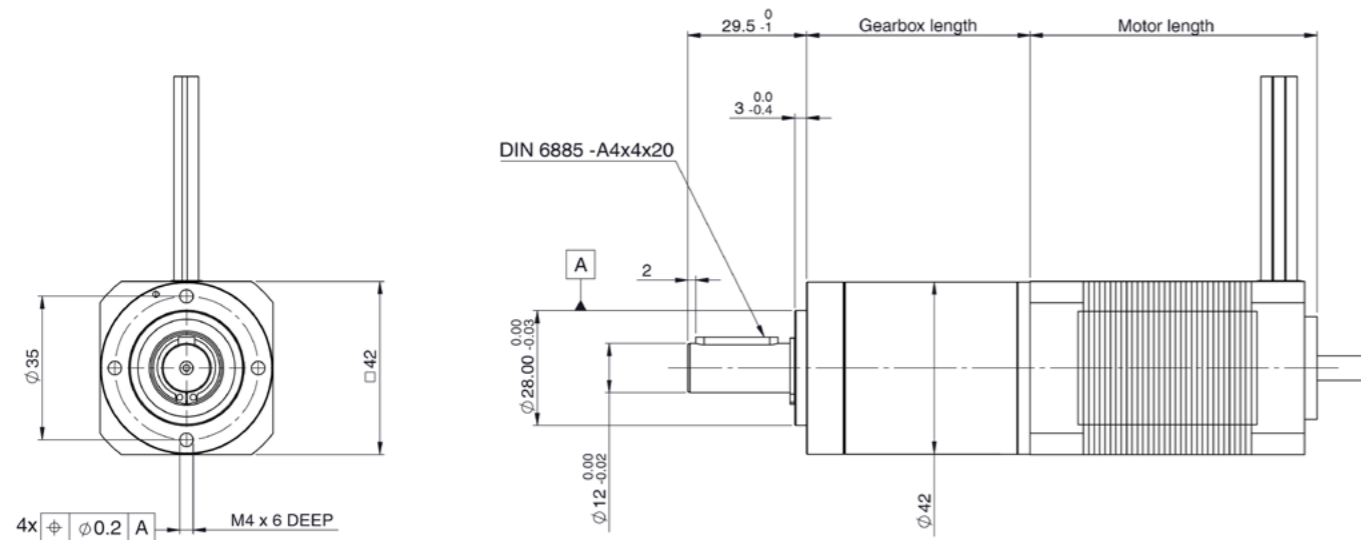
PBL42-PGx42

BLDC inline planetary geared motor

24 - 48 V // 26 - 42 W // Peak torque: 2.4 Nm

Inline door automation solution

all dimensions in mm



Technical data

Motor		PBL42-15	PBL42-15	PBL42-35	PBL42-35
Voltage	V	24 - 48	24 - 48	24 - 48	24 - 48
Maximum power	W	26	26	42	42
Nominal speed	rpm	333	267	333	267
Nominal torque ¹	Nm	1.0	1.0	1.5	1.5
Peak gearbox torque	Nm	16.9	16.9	16.9	16.9
Gearbox axial load	N	150	150	150	150
Gearbox radial load	N	240	240	240	240
Gearbox efficiency	%	81	81	81	81
Gearbox ratio ²	:1	12	15	12	15
Motor length	mm	47	47	67	67
Gearbox length	mm	54.8	54.8	54.8	54.8

¹ Nominal torque based on a 50% duty cycle ² Other ratios available on request

Accessories

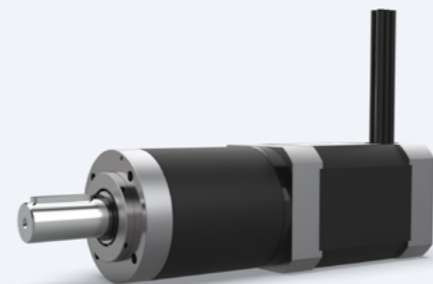
Encoder	+L mm
Low resolution (4 - 48 ppr)	12.0
High resolution incremental (4 - 4096 ppr)	9.0
High resolution absolute (4 - 4096 ppr)	12.0

Brake	+L mm
Power on	38.0
Power off	32.0

Output shaft

Modified shafts, additional pulleys, cogs, etc.

+L mm = added length



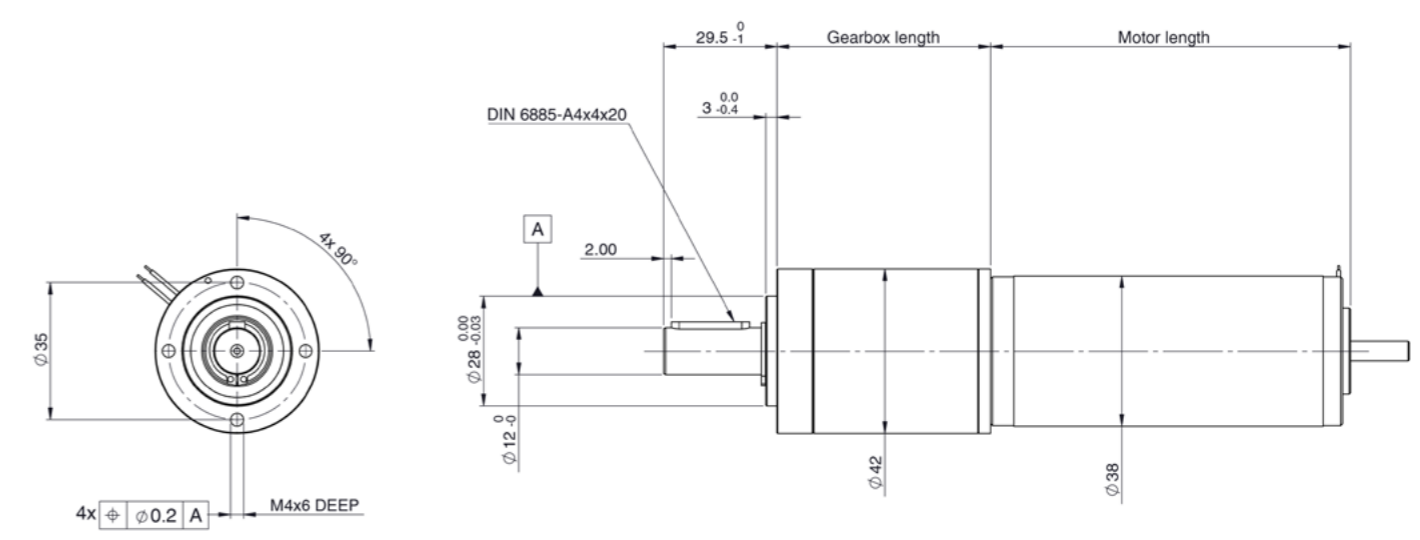
RE38-PGx42

BLDC inline planetary geared motor

24 - 48 V // 29 - 50 W // Peak torque: 2.8 Nm

Inline door automation solution

all dimensions in mm



Technical data

Motor		RE38-25	RE38-25	RE38-40	RE38-40
Voltage	V	24 - 48	24 - 48	24 - 48	24 - 48
Maximum power	W	29	29	50	50
Nominal speed	rpm	333	267	333	267
Nominal torque ¹	Nm	1.1	1.1	1.8	1.8
Peak gearbox torque	Nm	16.9	16.9	16.9	16.9
Gearbox axial load	N	150	150	150	150
Gearbox radial load	N	240	240	240	240
Gearbox efficiency	%	81	81	81	81
Gearbox ratio ²	:1	12	15	12	15
Motor length	mm	70	70	90	90
Gearbox length	mm	54.8	54.8	54.8	54.8

¹ Nominal torque based on a 50% duty cycle ² Other ratios available on request

Accessories

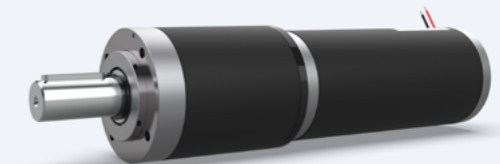
Encoder	+L mm
Low resolution (4 - 48 ppr)	12.0
High resolution incremental (4 - 4096 ppr)	9.0
High resolution absolute (4 - 4096 ppr)	12.0

Brake	+L mm
Power on	38.0
Power off	32.0

Output shaft

Modified shafts, additional pulleys, cogs, etc.

+L mm = added length



Accessories

Here at Parvalux, we appreciate that sometimes it's the small things that can really make a difference, that's why we offer a range of accessories to enable more precise control of your motor-gearbox system.



Parvalux encoder

Parvalux encoder	
Part number	KIT1003860
Pulses per revolution	48 PPR
Power supply	3.5 - 45.0 VDD
Current consumption	5.2 mA
Output high level	3.0 V
Output low level	44.5 V

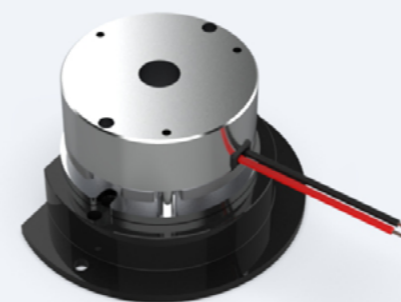


Magnetic encoder

Magnetic encoder	
Part number	735912
Pulses per revolution	48 - 2048 PPR
Power supply	3.6 - 5.5 VDD
Current consumption	6.0 mA
Output high level	0.8 V
Output low level	0.4 V



Additional flanges may be required when mounting the various accessories to our motors.



Brakes

- Power ON brakes available
- Power OFF brakes available on request
- Multiple strengths available
- Flange and magnetic mounting available

Controllers

Ready-to-connect positioning and multi-axis controllers. Providing the link between master controllers and easy-to-configure accurate positioning.



→ EPOS Compact 50/15 CAN



→ EPOS 70/15, digital positioning controller


Made in the UK...

...Available Worldwide


Parvalux products are used in a range of different industries all over the world, so it's important that we can support you wherever you may be.

Our global network ensures that we can answer your questions quickly and clearly, and, of course, get your order to you as soon as possible.


America

 **USA (East Coast)**
maxon precision motors, inc.
125 Dever Drive, Taunton, MA 02780, USA
sales.us@maxongroup.com // +1/508-916 6620

 **USA (West Coast)**
maxon precision motors, inc.
2860 Zanker Rd. Suite 107, San Jose, CA 95134, USA
info.us@maxongroup.com // +1/650-524-8822

 **Mexico**
maxon mexico
Av. de las Americas 1501, Piso 21, int. 2130, Col. Providencia 44630,
Guadalajara, Jalisco, Mexico
ventas.mx@maxongroup.com // +52 33 2101 2540


 **Brazil**
Treffer Ltda. (maxon sales agent)
AV. Protásio de Oliveira Penna 366 / 101, Cep 30575-360 Bairro
Bunitis, Belo Horizonte - MG, Brazil
motores@treffer.com.br // +55 31 3378 6222

 **Canada**
Electromate Inc. (maxon sales agent)
6221 Highway 7, Unit #15, Vaughan, Ontario L4H 0K8, Canada
sales@electromate.com // +1/877 737 8698


Europe / Middle-East / Africa


 **Austria, Hungary, Slovenia, Romania, Croatia, Serbia, and Bulgaria**
Kwapil & Co GmbH
Kammelweg 9, 1210 Wien, Austria
verkauf@kwapil.com // +43/1 - 278 85 85


 **Czech Republic and Slovakia**
Kwapil & Co. Gesellschaft m.b.H
Hlavní 1054/131, 624 00 Brno, Czech Republic
sales@kwapil.com // +420 541 211 538

 **Denmark**
DJ Stork Drives ApS
Naverland 2, 10., 2600 Glostrup, Denmark
ulrik.eriksen@storkdrives.com // +45 8988 2416


 **Finland, Estonia, Latvia, and Lithuania**
DJ Stork Drives OY
Mököistenkatu 2, 241 00 Salo, Finland
jyrki.leinonen@storkdrives.fi // +358 45 11 06 433

 **France**
maxon France
201 - 715 rue du Chat Botté, 01700 Beignost, France
contact.fr@maxongroup.com // +33/472 - 018 300

 **Germany**
maxon motor gmbh
Truderinger Strasse 210, 81825 München, Germany
sales.de@maxongroup.com // +49/89 - 42 04 93 - 0


 **Great Britain and Ireland**
maxon motor uk Ltd.
maxon House, Hogwood Lane, Finchampstead, Berkshire, RG40 4QW, UK
sales.uk@maxongroup.com // +44 (0) 1189 733337

 **Israel**
maxon motor Israel Ltd.
Leshem Industrial Park 6, P.O. Box 3094, Caesarea 3079870, Israel
sales.il@maxongroup.com // +972 74 749 0888

 **Italy**
maxon motor italia S.r.l.
Società Unipersonale, Via Sirtori 35, 20017 Rho MI, Italy
sales.it@maxongroup.com // +39 02 93580588


Europe / Middle-East / Africa

 **Netherlands, Belgium, and Luxembourg**
maxon motor benelux bv
Josink Kolkweg 38, 7545 PR Enschede, Netherlands
sales.nl@maxongroup.com // +31 53 744 07 44

 **Norway**
DJ Stork Drives AS
Garverivegen 6, 2740 Roa, Norway
arve.stensrud@storkdrives.com // +47/6199 3001

 **Poland**
maxon Polska sp. z o.o
Poznań Technology and Industry Park, 28 Czerwca 1956 r. 404, 61 - 441
Poznań, Poland
sprzedaz@maxongroup.com // +48 618 800 830

 **Spain and Portugal**
maxon motor iberica
C/ Polo Norte N° 9, 28850 Torrejón de Ardoz, Spain
info.es@maxongroup.com // +34 916 564 973

 **Sweden and Iceland**
Stork Drives AB
Box 1158, Solna Strandväg 116, 171 54 Solna, Sweden
info@storkdrives.se // +46/8 - 635 60 00

 **Switzerland**
maxon Switzerland ag
Industriestrasse 23, 6055 Alpnach, Switzerland
sales.ch@maxongroup.com // +41 (0) 41 662 95 95

 **South Africa**
DNH Technologies
P.O. Box 31151, 1684 Kyalami, South Africa
info@dnhtrade.co.za // +27 11 468 2722


 **Turkey**
Ensatek Muhendisilik Otomsyon Sanayi Ticaret Limited Sirketi
Cevizli Mah. Mustafa Kemal Cad. No: 66/B, Kat: 13 D : 88 34865
Kartal/Istanbul, Turkey
ensatek@ensatek.com.tr // +90 216 510 88 64

Pacific

 **Australia and New Zealand**
maxon motor australia Pty Ltd
Unit 1, 12-14 Beaumont Road, Mount Kuring-Gai, NSW 2080, Australia
sales.au@maxongroup.com // +61 2 9457 7477

Asia

 **China**
maxon motor (Suzhou) Co., Ltd.
5F, Block 1 No. 1128, East Jiangxing Road, Wujiang Economic
Developing Zone, 215200 Suzhou, Jiangsu Province, China
sales.cn@maxongroup.com // +86/512-8207 9287

 **India**
maxon precision motor India Pvt. Ltd.
Niran Arcade, No. 563/564, New BEL Road, RMV 2nd Stage,
Bangalore - 560 094, India
sales.in@maxongroup.com // +91 80417 34132


 **Japan**
maxon Japan
5-1-15 Shinjuku, Shinjuku-Ku, Tokyo 160-0022, Japan
sales.jp@maxongroup.com // +81/3 - 3350 42 61


 **South Korea**
maxon motor Korea Co., Ltd.
27, Banpo-daero 14-gil, Seocho-Gu, Seoul, South Korea 06652
info.kr@maxongroup.com // +82 2 3486 3441

 **Singapore**
maxon motor SEA Pte. Ltd.
33 UBI Avenue 3 #08-40, Singapore 408868
admin.sg@maxongroup.com // +65/6950 4628

 **Taiwan**
maxon motor Taiwan Co. Ltd.
6F.-7 No. 16, Lane 609, Sec. 5, Chongxin Rd., Sanchong Dist., New
Tapei City 241, Taiwan (R.O.C.)
sales.tw@maxongroup.com // +886-2-2999-3558

 **Hong Kong**
Servo Dynamics (H.K) Ltd.
Rm. 1504, 15/F, Yuen Long Trading Centre, 33 Wang Yip Street West,
Yuen Long, N.T., Hong Kong
sales@servodynamics.com.hk // +852/2409 9986

 **Malaysia**
Servo Engineering Sdn. Bhd.
No. 15 G, Ground Floor, Highway Center, Jalan 51/205, 46050 Petaling
Jaya, Selangor Darul Ehsan, Malaysia
sales-rfq@servo.my // +603-7782 3540

 **Thailand**
Servo Dynamics (Thailand) Co. LTD
52/210 Moo 2, Soi Wadnamdaeng, Srinakarini Rd. 10540 Bangkaew
Bangplee Samutprakarn, Thailand
dmk@servoline.com // +66 2 753 56 25

parvalux

by **maxon**

