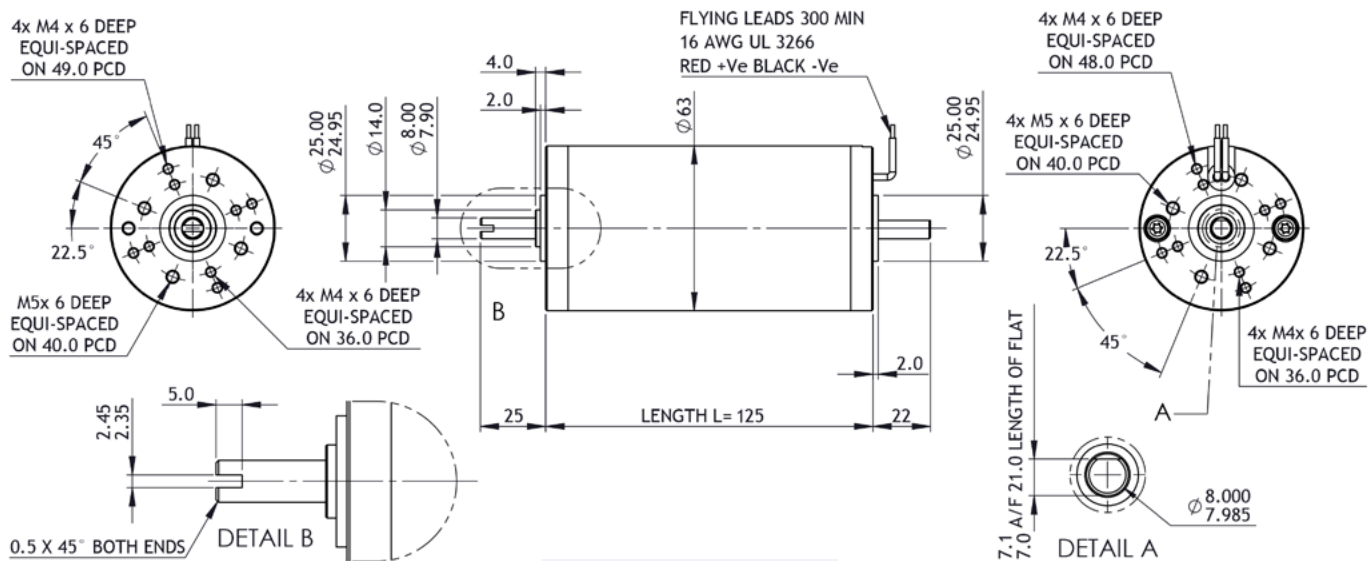


BRx63-55 PMDC motor

Ø63 mm frame // 55 mm stack

parvalux

by **maxon**



all dimensions in mm

Part number key

Modular

#####

Standard

#####

Calculated data

#####

Technical data

Available on request: Custom shaft length and diameter, shaft on both sides, special windings for specific voltages and speed, higher IP protection class, custom flanges and connectors

All products are built in accordance to performance tolerances from EN60034-1:2010. As continuous improvement, Parvalux periodically test their product range to ensure test results are as accurate as possible and are therefore subject to change. Please ensure you are using the latest datasheets found on our website

1 Part number		781088	781089	781090
2 Nominal power	W	85	85	85
3 Nominal voltage	V	12	24	48
4 No load speed	rpm	3521	3617	3613
5 No load current	A	0.53	0.31	0.18
6 Nominal speed	rpm	3000	3000	3000
7 Nominal continuous torque (S1)	Nm	0.27	0.27	0.27
8 Nominal continuous current (S1)	A	9.1	4.7	2.4
9 Max. intermittent torque (S2 - 15 minutes)	Nm	0.45	0.45	0.45
10 Stall current	A	75.0	27.9	19.2
11 Stall torque	Nm	2.40	1.65	2.20
12 Stack length	mm	55	55	55
13 Maximum efficiency	%	81	81	85
14 Terminal resistance - phase to phase	Ω	0.160	0.593	2.300
15 Terminal inductance - phase to phase	mH	-	0.92	3.60
16 Speed constant	rpm/V	287.0	150.9	75.4
17 Torque constant	Nm/A	0.03	0.06	0.10
18 Speed torque gradient	rpm/Nm	1491	2336	1741
19 Rotor inertia	Kgcm²	9.3 x 10 ⁻⁵	9.3 x 10 ⁻⁵	9.3 x 10 ⁻⁵

Thermal data

20 Ambient temperature	°C	40
------------------------	-----------	----

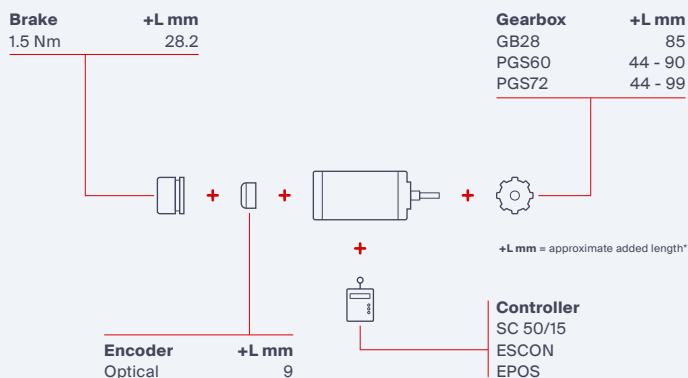
Mechanical data

21 Radial load [distance from flange]	N [mm]	150 [15]
---------------------------------------	---------------	----------

Other data

22 Number of poles		2
23 Weight	Kg	1.16
24 IP rating		IP54
25 Enclosure		Enclosed
26 Insulation Class		F
27 Reversible		Yes

Modular system



*additional length may also be required for mounting flange between components