

PARVALUX



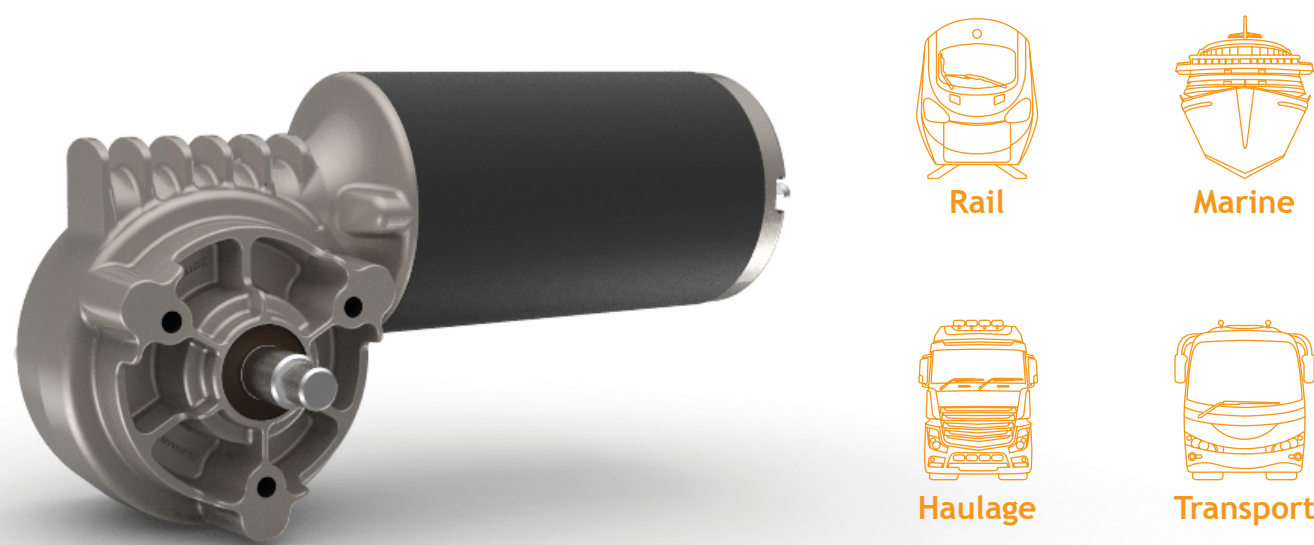
**VIPER3**

The Ultimate in Wiper System Technology

# About Us

Parvalux’s geared motor solutions are found in a huge range of applications from the safety critical, such as those in healthcare like wheelchairs and patient hoists, to powering the windscreen wipers on the world’s largest ships and fastest trains. They are also used extensively in the leisure industry in everything from golf trolleys and carts to caravan movers and clay pigeon traps.

With over 70 years’ experience in providing geared motor solutions to a number of different industries, it is the high efficiency and reliability that sets Parvalux products above its competitors. The breadth of experience we have obtained working on a range of different applications means the Parvalux design team can produce solutions from scratch, and if needed work as an extension of your own design team, to ensure you get the perfect solution to power your product.



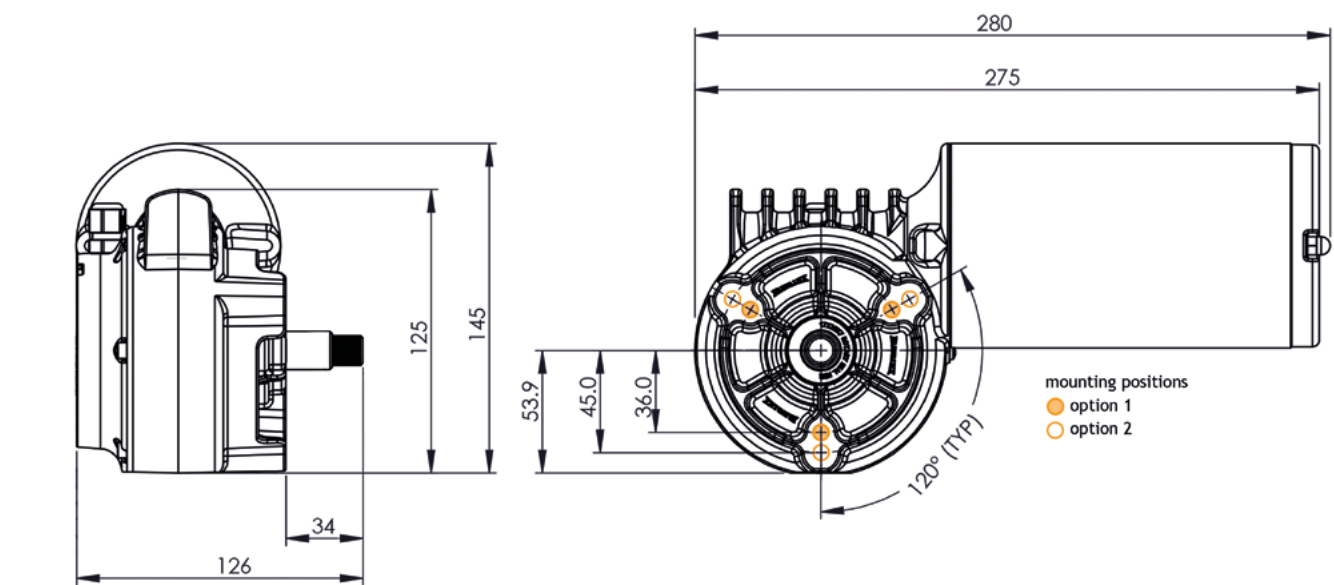
## VIPER3 | Wiper Motor

Designed and built to withstand a variety of different environments, the new **VIPER3** from Parvalux is the perfect geared motor solution for use in your large wiper system application. Trusted to work reliably in the harshest conditions, the **VIPER3** can comfortably operate when faced with dust, liquid, high & low temperatures, and wide variances in humidity, allowing it to integrate seamlessly into vehicles across the rail, marine, haulage, and transport sectors.

Equipped with multiple mounting options, the space conscious design of the **VIPER3** allows for it to be easily mounted into your application. This, combined with internal wiring and an enclosed commutation brush design, makes this self-contained, IP54 rated, geared motor the ideal solution for use in your large wiper system.

## Features and Benefits

- **Adaptable mounting and added support structures** offer excellent reliability and quick and easy integration into your system.
- **Large brush design** reduces wear on the brushes in the higher speed modes of the system, ensuring the VIPER3 works hour after hour, day after day
- **Reduced gear wear compared to other systems on the market**, made possible through the use of composite materials, a larger diameter gear, and a one piece worm spindle
- **IP Protection standard options range from IP42 to IP56**
- **Space conscious design** with external measurements of just 280 x 126 x 145mm
- **Mode Switching:** separate mode switch with internally routed wiring ensures a clean and minimal design



	Family	
	80 Series	110 Series
Nominal Voltage	24/48/110/220 VDC *	24/48/110/220 VDC *
Nominal Speed	2 Speed - 21/36 or 30/45 RPM *	2 Speed - 21/36 or 30/45 RPM *
Nominal Torque	9Nm/6.5Nm @ 21/36 RPM and 9Nm/6.5Nm @ 30/45 RPM	15Nm/10Nm @ 21/36 RPM and 15Nm/10Nm @ 30/45 RPM
Breakaway Torque	80Nm	110Nm
Nominal Current	3/3.7A based @ 24V 30/45RPM unit	5/6.2A based @ 24V 30/45RPM unit
Nominal Output Power	51/56W based @ 24V 30/45RPM unit	86/86W based @ 24V 30/45RPM unit
Direction	Clockwise or Counter Clockwise	Clockwise or Counter Clockwise
Duty	S1	S1
Weight	4.0Kg	4.5Kg
EMC	EN50121-3-2 2015 Compliant	EN50121-3-2 2015 Compliant
IP Rating	IP42/54/56	IP42/54/56
Enclosure	TENC	TENC
Mounting	Gearbox housing - 3x Equi-spaced M8 on a Ø72 P.C.D	Gearbox housing - 3x Equi-spaced M10 on a Ø90 P.C.D
Output Shaft	Ø12.9, 60 Tooth Splined *	Ø12.9, 60 Tooth Splined / Ø15.0, 70 Tooth Splined *

\*other options available on request





# DC GEARED MOTORS

Motor Only or Geared

Brushed & Brushless

Standard, Semi-Custom, & Fully  
Bespoke Options Available

Power Range: 7.5W - 985W

Torque Range: 0.3Nm - 250Nm

## PARVALUX PRODUCT RANGE

# AC GEARED MOTORS

Motor Only or Geared

Single & Three Phase

Power Range: 8W - 750W

Torque Range: 0.05Nm - 250Nm

GET IN TOUCH FOR YOUR PERFECT GEARED MOTOR SOLUTION

# PARVALUX®

Ver:11/17

[www.parvalux.com](http://www.parvalux.com)

[sales@parvalux.com](mailto:sales@parvalux.com)

+44 (0)1202 512575

490 Wallisdown Road

Bournemouth

BH11 8PU

United Kingdom